
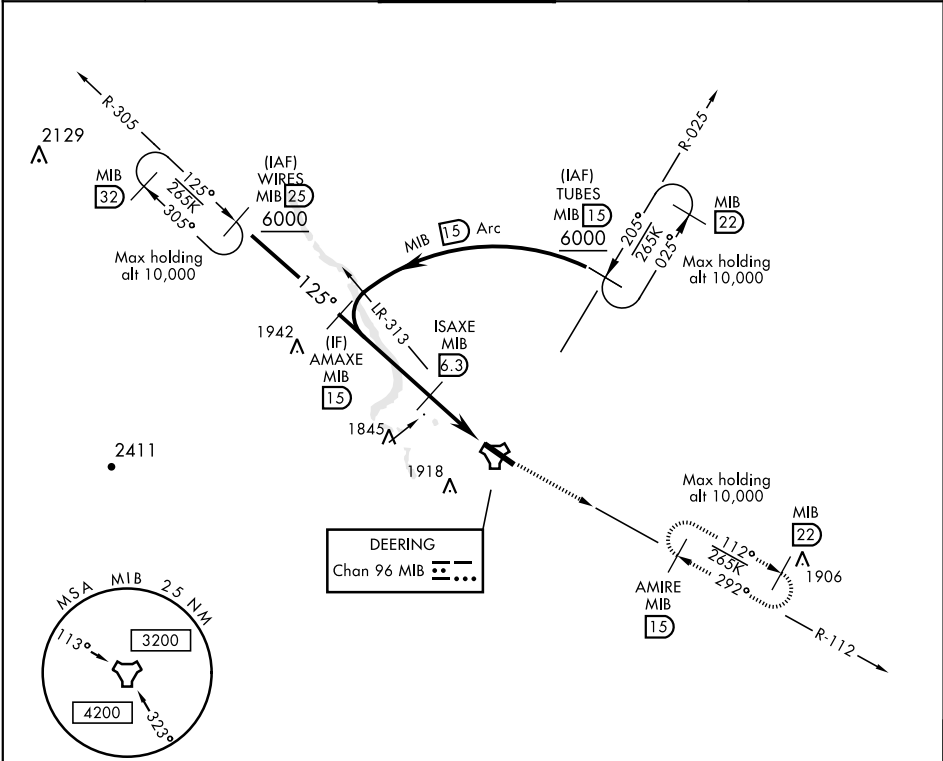
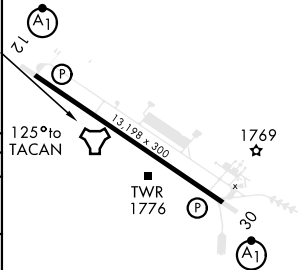


TACAN Y RWY 12

TACAN Chan 96	APCH CRS 125°	Rwy ldg 13,198 TDZE 1666 Arpt Elev 1666	AL-5013 [USAF]	MINOT AFB (KMIB)
* When ALS inop, increase CAT AB RVR to 55 vis to 1 mile, CAT CDE vis to 1¼ miles. ** Circling not authorized N of Rwy 12-30.			ALSF-1 	MISSED APPROACH: Climb to 5000 via MIB TACAN R-112 direct AMIRE and hold.
ATIS ★ 278.8	MINOT APP CON 119.6 363.8	MINOT TOWER ★ 120.65 253.5	GND CON 134.0 275.8	CLNC DEL 326.2



EMERG SAFE ALT 100 NM 4700

AMAXE MIB R-305 5000 125° 2.57° TCH 47		ISAXE MIB 6.3 3200 4.8 NM 0.6		TACAN GAVGE MIB 1.5 5000 MIB R-112 AMIRE MIB 15		ELEV 1666	TDZE 1666
CATEGORY	A	B	C	D	E		
S-12*	2100/24	434 (500-½)	2100/40	434	(500-¾)		
CIRCLING**	2120-1 454 (500-1)	2140-1 474 (500-1)	2180-1½ 514 (600-1½)	2220-2	554 (600-2)		

TACAN Y RWY 12

NC-1, 31 DEC 2020 to 28 JAN 2021

NC-1, 31 DEC 2020 to 28 JAN 2021