

LOC/DME I-ONA <b>109.35</b> Chan 30 (Y)	APP CRS <b>300°</b>	Rwy Idg TDZE <b>656</b> Apt Elev <b>656</b>
---	------------------------	---

ILS Z or LOC Z RWY 30

WINONA MUNI-MAX CONRAD FIELD (ONA)

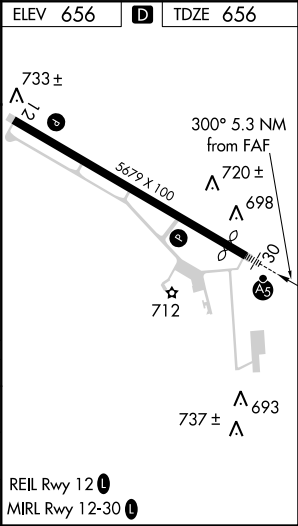
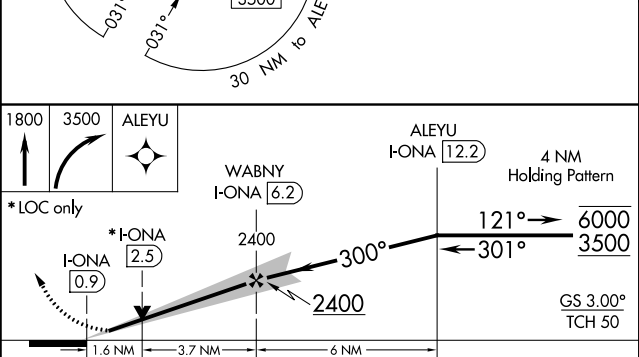
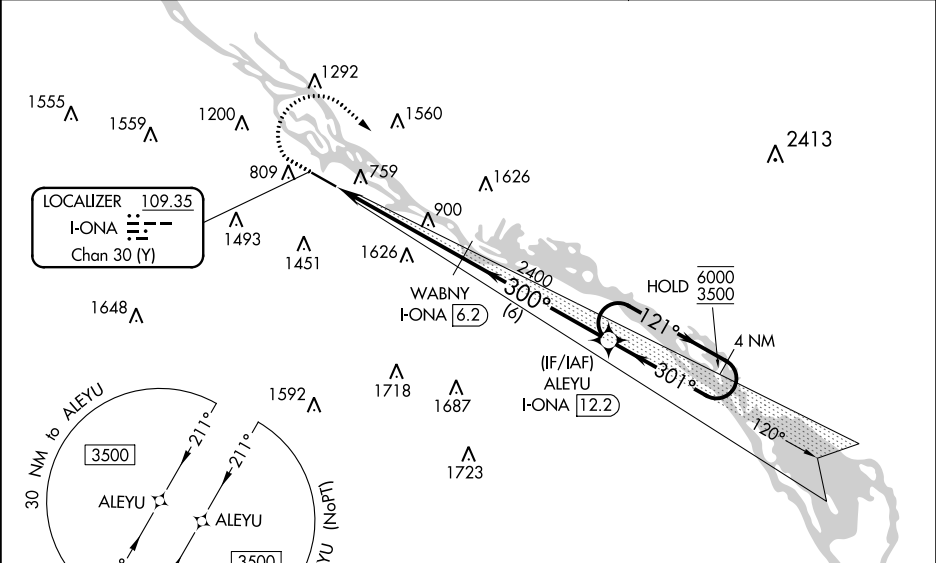
RNAV 1-GPS or radar required for procedure entry. DME required.  
RNAV-1 GPS required from MAP to ALEYU.

**VDP** NA with La Crosse altimeter setting. When local altimeter setting not received, use La Crosse altimeter setting and increase S-ILS 30 DA to 1064 and all visibilities 1/8 SM, increase all MDA 60 feet, and visibility S-LOC 30 Cat C/D 1/8 SM and Circling Cat B visibility 1/4 SM. For inop ALS, increase S-ILS 30 all Cats visibility to 1/8 SM, and S-LOC 30 Cats C/D visibility to 1/8 SM. For inop ALS when using La Crosse altimeter setting, increase S-ILS 30 all Cats visibility to 1/8 SM, and increase S-LOC 30 Cats C/D visibility to 1/4 SM.

MALSR

MISSED APPROACH:  
Climb to 1800 then climbing right turn to 3500 direct ALEYU and hold.

AWOS-3 <b>118.075</b>	MINNEAPOLIS CENTER <b>128.6 363.0</b>	UNICOM <b>122.8 (CTAF)</b>
--------------------------	--	-------------------------------



CATEGORY	A	B	C	D
S-ILS 30	1053-3/4 397 (400-3/4)			
S-LOC 30	1220-1/2 564 (600-1/2)	1220-1/4 564 (600-1/4)		
CIRCLING	1560-1/4 904 (1000-1/4)	1600-1/4 944 (1000-1/4)	1780-3 1124 (1200-3)	1980-3 1324 (1400-3)