

LOC I-INL 111.95	APP CRS 313°	Rwy Idg TDZE 1166 Apt Elev 1185
----------------------------	------------------------	---

COPTER ILS or LOC RWY 31
FALLS INTL-EINARSON FIELD (INL)

⚠
⚠
⚠ -31°C

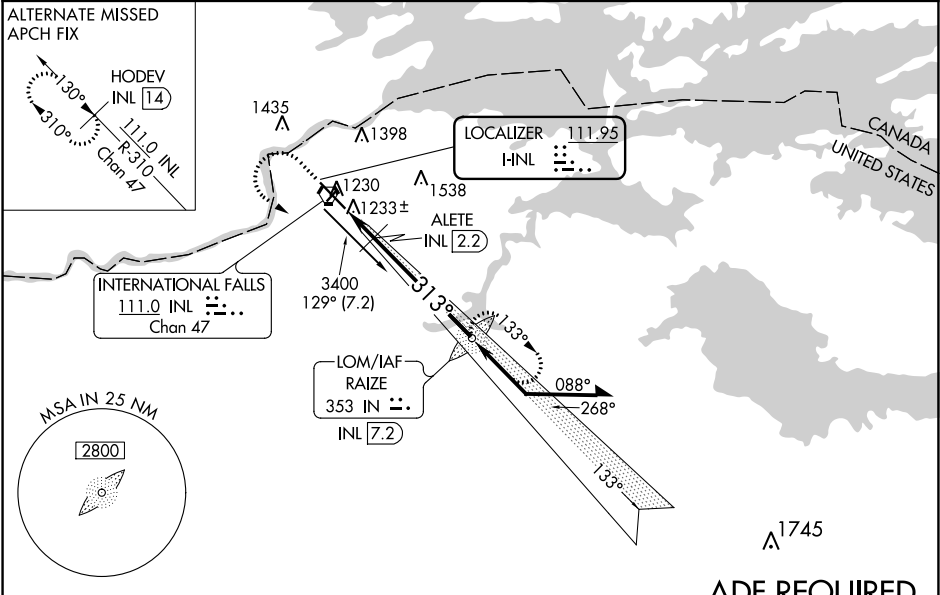
When local altimeter setting not received, use Baudette altimeter setting and increase DA 127 feet and ILS visibility $\frac{3}{8}$ mile, increase all MDA 140 feet and LOC visibility $\frac{3}{8}$ mile, increase ALETE fix minimums visibility $\frac{1}{4}$ mile. For inoperative MALSR, increase H-ILS 31 visibility to $\frac{1}{2}$ mile. For inoperative MALSR when using Baudette altimeter setting, increase H-ILS 31 visibility to $1\frac{1}{8}$ and H-LOC 31 visibility to 1 mile.

MALSR

⚠

MISSED APPROACH:
Climb to 2500 then climbing left turn to 3400 direct RAIZE LOM and hold.

ASOS 120.0	MINNEAPOLIS CENTER 120.9 377.1	UNICOM 122.8 (CTAF) ⚠
----------------------	--	--



ELEV 1185	D	TDZE 1166
-----------	----------	-----------

HIRL Rwy 13-31 **⚠**

313° 6.5 NM from FAF

FAF to MAP 6.5 NM

Knots: 45, 60, 75, 90, 105
Min:Sec: 8:40, 6:30, 5:12, 4:20, 3:43

2500, 3400, IN

*1760 when using Baudette altimeter setting.

INL 0.7, ALETE INL 2.2, 1620*, 1.5 NM, 5 NM

IN RAIZE LOM INL 7.2, 3307, 133°, 313°, 3400, 3400, GS 3.00° HCH 45, Remain within 5 NM

CATEGORY	COPTER	B	C	D
H-ILS 31	1366- $\frac{1}{4}$ 200 (200- $\frac{1}{4}$)		NA	
H-LOC 31	1620- $\frac{3}{8}$ 454 (500- $\frac{3}{8}$)		NA	
CIRCLING			NA	
ALETE FIX MINIMUMS				
H-LOC 31	1520- $\frac{1}{4}$ 354 (400- $\frac{1}{4}$)		NA	
CIRCLING			NA	

NC-1, 31 DEC 2020 to 28 JAN 2021

NC-1, 31 DEC 2020 to 28 JAN 2021