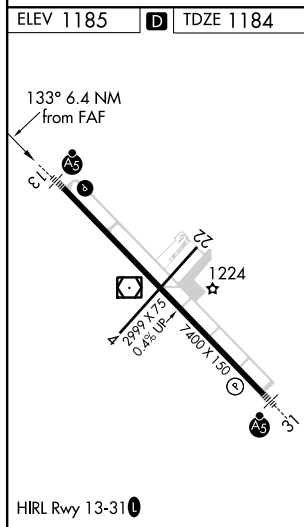


ILS or LOC/DME RWY 13  
FALLS INTL-FINARSON FIELD (INTL)

**MISSED APPROACH:**  
Climb to 3400 direct  
IN LOM and hold.

UNICOM

### 122.8 (CTAF)

IN 

CATEGORY	A	B	C	D
S-ILS 13	1384-½ 200 (200-½)			
S-LOC 13	1820-½ 636 (700-½)	1820-1¼ 636 (700-1¼)		1820-1½ 636 (700-1½)
CIRCLING	1820-1 635 (700-1)	1820-1¾ 635 (700-1¾)		1820-2 635 (700-2)