

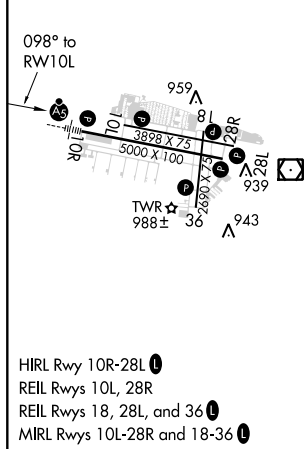
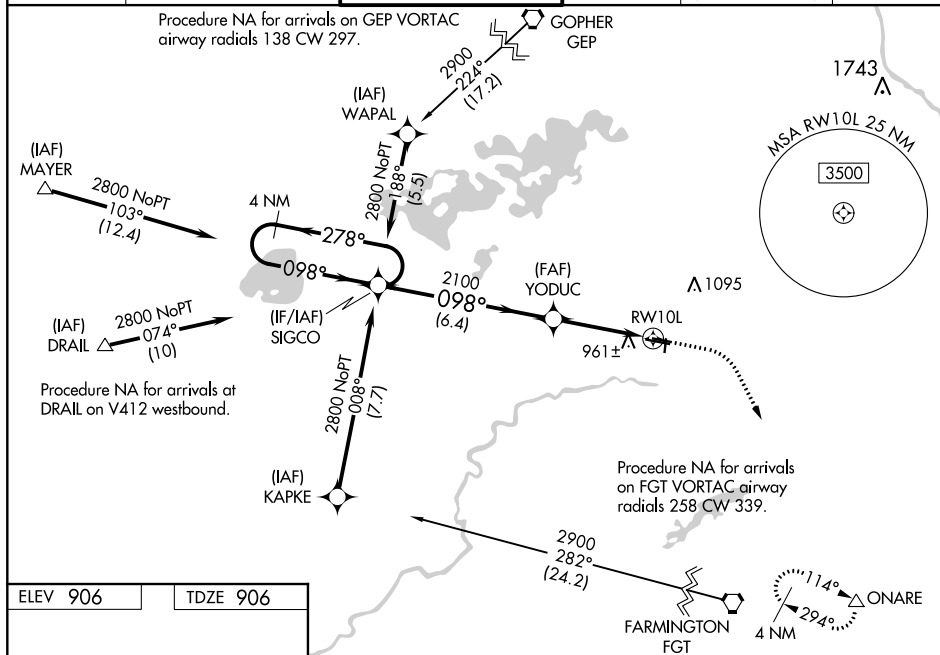
WAAS CH <b>42510</b> <b>W10A</b>	APP CRS <b>098°</b>	Rwy Idg <b>3898</b> TDZE <b>906</b> Apt Elev <b>906</b>
----------------------------------------	------------------------	---------------------------------------------------------------

RNAV (GPS) RWY 10L  
FLYING CLOUD (FCM)

**V** Baro-VNAV NA when using Minneapolis-St Paul Intl/Wold Chamberlain altimeter setting. **A** For uncompensated Baro-VNAV systems, LNAV-VNAV NA below -22°C (-7°F) or above 54°C (130°F). DME/DME RNP-0.3 NA. Night Landing: Rwy 18/36 NA. When local altimeter setting not received, use Minneapolis-St Paul Intl/Wold Chamberlain altimeter setting and increase all DA 34 feet and all MDA 40 feet; increase LNAV/VNAV visibility ½ mile all Cats, and Circling Cat D ¼ mile.

**MISSED APPROACH:** Climb to 1400 then climbing right turn to 2900 direct ONARE and hold.

ATIS <b>124.9</b>	MINNEAPOLIS APP CON <b>134.7 284.7</b>	FLYING CLOUD TOWER ★ <b>119.15 (CTAF) 0</b>	GND CON <b>121.7</b>	CLNC DEL <b>121.7</b> (When twr closed)	UNICOM <b>122.95</b>
----------------------	-------------------------------------------	------------------------------------------------	-------------------------	-----------------------------------------------	-------------------------



4 NM Holding Pattern

SIGCO

YODUC

2100

RW10L

2800

278°

098°

098°

2100

6.4 NM

3.6 NM

CATEGORY	A	B	C	D
LPV DA	1187-1 281 (300-1)			
RNAV/ VNAV DA	1230-1 1/8 324 (400-1 1/2)			
RNAV MDA	1240-1 334 (400-1)			
<b>C</b> CIRCLING	1320-1 414 (500-1)	1440-1 534 (600-1)	1440-1 1/2 534 (600-1 1/2)	1540-2 634 (700-2)

1400

2900

ONARE

△

RNAV (GPS) RWY 10L