

VOR/DME FCM	APP CRS	Rwy Idg	5000
117.7	100°	TDZE	905
Chan 124		Apt Elev	906

VOR RWY 10R
FLYING CLOUD (FCM)

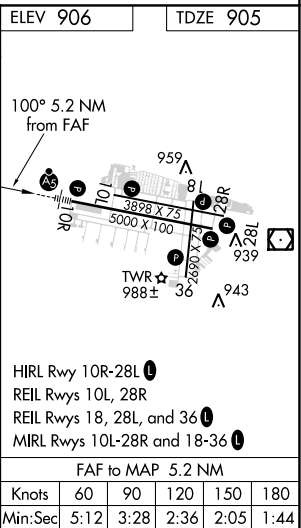
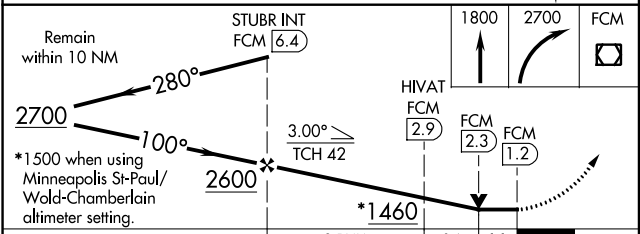
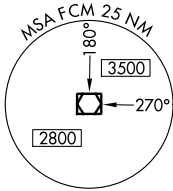
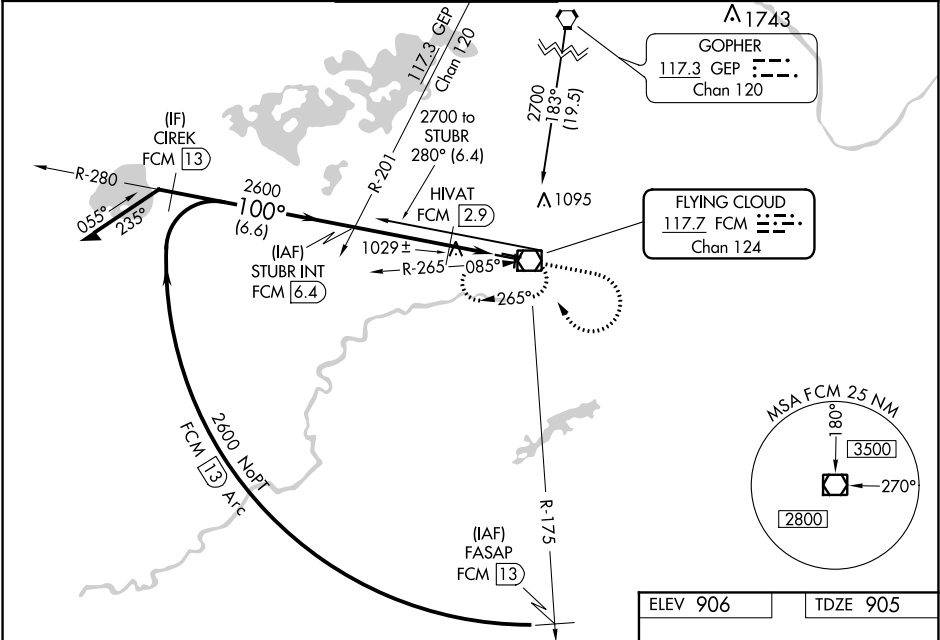
When local altimeter setting not received, use Minneapolis St-Paul/Wold-Chamberlain altimeter setting and increase all MDA 40 feet, Hivat fix minimums: Increase S-10R Cat C visibility ¼ mile. For inoperative MALS, Hivat fix minimums: Increase S-10R Cat D visibility to 1 ¼ mile. VDP NA when using Minneapolis St-Paul/Wold-Chamberlain altimeter setting. Night Landing: Rwy 18/36 NA.

MALS



MISSED APPROACH: Climb to 1800 then climbing right turn to 2700 direct FCM VOR/DME and hold, continue climb-in-hold to 2700.

ATIS	MINNEAPOLIS APP CON	FLYING CLOUD TOWER *	GND CON	CLNC DEL	UNICOM
124.9	134.7 284.7	119.15 (CTAF)	121.7	121.7 (When twr closed)	122.95



CATEGORY	A	B	C	D
S-10R	1460-½	555 (600-½)	1460-1 555 (600-1)	1460-1¼ 555 (600-1¼)
CIRCLING	1460-1	554 (600-1)	1460-1½ 554 (600-1½)	1540-2 634 (700-2)
HIVAT FIX MINIMUMS				
S-10R	1280-½	375 (400-½)		1280-1 375 (400-1)
CIRCLING	1320-1 414 (500-1)	1440-1 534 (600-1)	1440-1½ 534 (600-1½)	1540-2 634 (700-2)

NC-1, 31 DEC 2020 to 28 JAN 2021

NC-1, 31 DEC 2020 to 28 JAN 2021