

ATIS  
124.9  
MINNEAPOLIS CLNC DEL  
121.7 (when tower closed)  
FLYING CLOUD TOWER ★  
119.15  
MINNEAPOLIS DEP CON  
134.7 335.65

(WLSTN7.WLSTN) 18032  
WLSTN SEVEN DEPARTURE

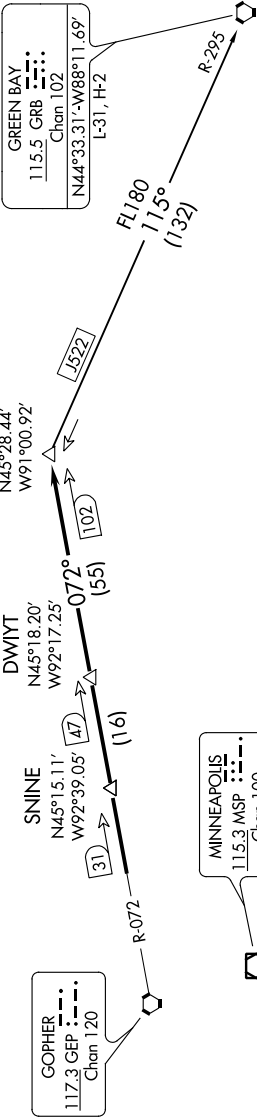
AL-5094 (FAA)

FLYING CLOUD (FCM)  
MINNEAPOLIS, MINNESOTA

TOP ALTITUDE:  
(JETS) 7000/  
(PROPS) 5000

TAKEOFF MINIMUMS

Rwys 10L/R, 18, 28L/R, 36: Standard.



DEPARTURE ROUTE DESCRIPTION

TAKEOFF ALL RUNWAYS: Fly assigned heading and altitude for RADAR vectors to GEP R-072 to WLSTN/GEP 102 DME. Thence . . . .

. . . on assigned transition or assigned route. Expect clearance to filed altitude/flight level 10 (ten) minutes after departure.

GREEN BAY TRANSITION (WLSTN7.GRB): From over WLSTN on GRB R-295 to GRB VORTAC.

NOTE: RADAR required.  
NOTE: Chart not to scale.

WLSTN SEVEN DEPARTURE  
(WLSTN7.WLSTN) 17AUG17

MINNEAPOLIS, MINNESOTA  
FLYING CLOUD (FCM)