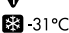

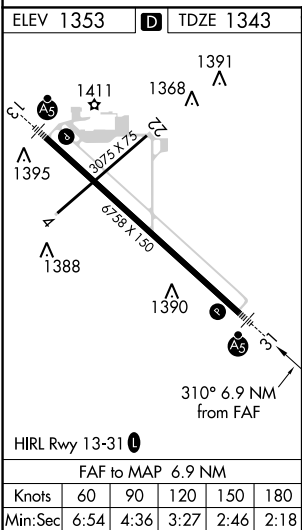
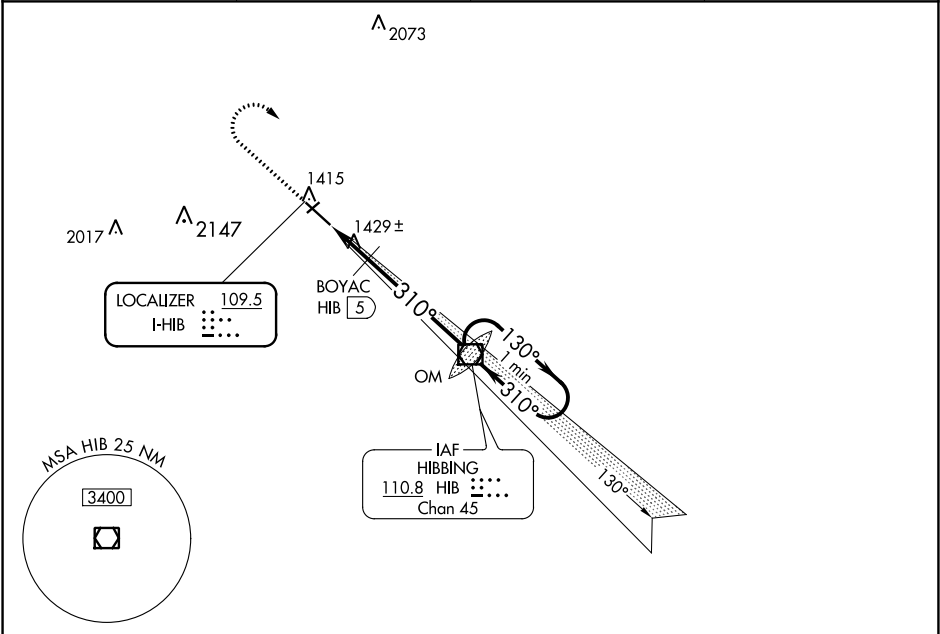




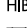
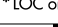
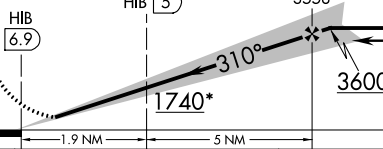
LOC I-HIB <b>109.5</b>	APP CRS <b>310°</b>	Rwy Idg TDZE Apt Elev <b>6758</b> <b>1343</b> <b>1353</b>
---------------------------	------------------------	--

ILS or LOC RWY 31  
RANGE RGNL (HIB)

 -31°C	For inop MALSR, increase BOYAC FIX minimums S-LOC 31 Cat D visibility to 1. # DME from HIB VOR/DME.	MALSR 	MISSED APPROACH: Climb to 2500 then climbing right turn to 3600 direct HIB VOR/DME and hold.
--	---	--	---

ASOS <b>126.425</b>	DULUTH APP CON <b>125.45 233.7</b>	CLNC DEL <b>127.4</b>	UNICOM <b>123.0 (CTAF) 0</b>
------------------------	---------------------------------------	--------------------------	---------------------------------



2500	3600	HIB			
					
			BOYAC HIB 5	HIB VOR/DME OM 3558	One Minute Holding Pattern
				3600	GS 2.90° TCH 60
* LOC only			1.9 NM	5 NM	
CATEGORY	A		B	C	D
S-ILS 31	1543-½ 200 (200-½)				
S-LOC 31	1740-½ 397 (400-½)				1740-¾ 397 (400-¾)
CIRCLING	1820-1 467 (500-1)	1840-1 487 (500-1)	1840-1½ 487 (500-1½)	1920-2 567 (600-2)	
# BOYAC FIX MINIMUMS					
S-LOC 31	1680-½ 337 (400-½)				1680-¾ 337 (400-¾)
CIRCLING	1820-1 467 (500-1)	1840-1 487 (500-1)	1840-1½ 487 (500-1½)	1920-2 567 (600-2)	

NC-1, 31 DEC 2020 to 28 JAN 2021

NC-1, 31 DEC 2020 to 28 JAN 2021