

WAAS CH <b>69222</b> <b>W13A</b>	APP CRS <b>130°</b>	Rwy Idg TDZE <b>1354</b> Apt Elev <b>1354</b>
--	------------------------	---

RNAV (GPS) RWY 13  
RANGE RGNL (HIB)

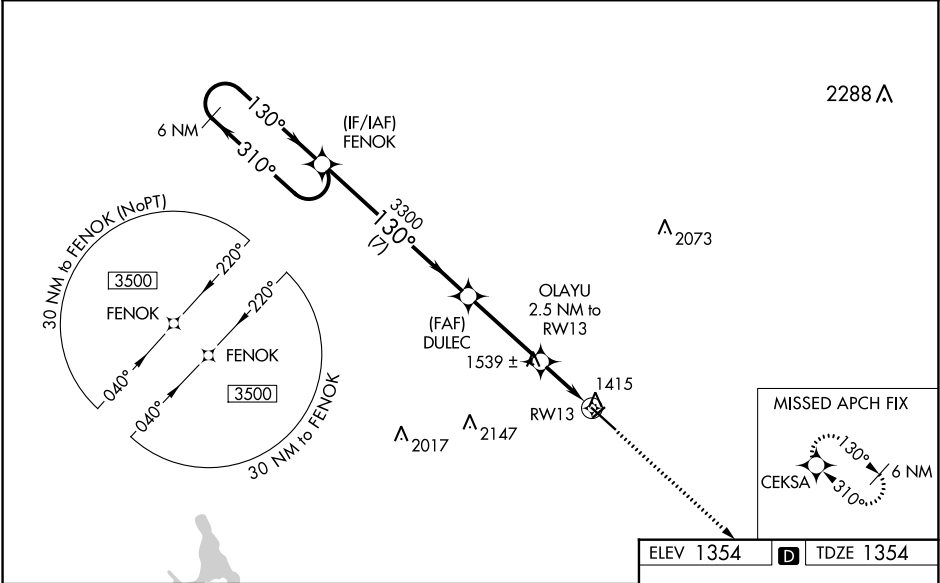
**31°C**

Circling to Rwy 4 NA at night. DME/DME RNP-0.3 NA. VDP and Baro-VNAV NA when using Eveleth altimeter setting. For uncompensated Baro-VNAV systems, LNAV/VNAV NA below -17°C (2°F) or above 35°C (95°F). Helicopter visibility reduction below ¾ SM NA. When local altimeter setting not received, use Eveleth altimeter setting and increase all DA 36 feet, and all MDA 40 feet, and increase LNAV Cat C/D visibility to 1 mile. Inop table does not apply to LPV and LNAV/VNAV all Cats. For inop MALSR, increase LNAV Cat A/B visibility to 1 mile. For inop MALSR when using Eveleth altimeter setting, increase LPV and LNAV/VNAV all Cats visibility to ¾.

MALSR

MISSED APPROACH:  
Climb to 3500 direct  
CEKSA and hold.

ASOS <b>126.425</b>	DULUTH APP CON <b>125.45 233.7</b>	CLNC DEL <b>127.4</b>	UNICOM <b>123.0 (CTAF) 0</b>
------------------------	---------------------------------------	--------------------------	---------------------------------



6 NM Holding Pattern

FENOK

3500

GP 3.00°  
TCH 48

DULEC

OLAYU 2.5 NM to RW13

\*1.3 NM to RW13

RW13

3300

\*2180

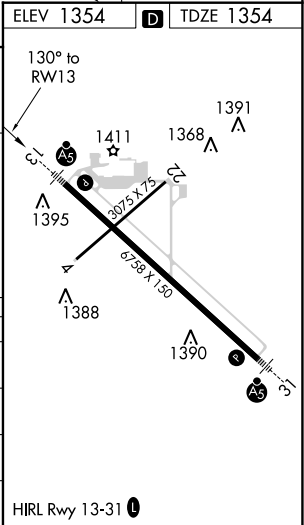
7 NM

3.5 NM

1.2 NM

1.3 NM

CATEGORY	A	B	C	D
LPV DA	1604-¾ 250 (300-¾)			
LNAV/VNAV DA	1614-¾ 260 (300-¾)			
LNAV MDA	1800-¾ 446 (500-¾)	1800-7/8 446 (500-7/8)		
CIRCLING	1820-1 466 (500-1)	1840-1 486 (500-1)	1840-1½ 486 (500-1½)	1920-2 566 (600-2)



NC-1, 31 DEC 2020 to 28 JAN 2021

NC-1, 31 DEC 2020 to 28 JAN 2021