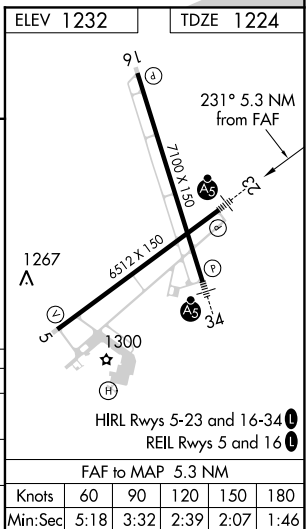



# ILS or LOC RWY 23

MALSR

**MISSED APPROACH:** Climb to 2100 then climbing right turn to 3000 direct LAREW LOM and hold.

ALTERNATE MISSED APCH FIX

CATEGORY	A	B	C	D
S-ILS 23	1424-½ 200 (200-½)			
S-LOC 23	1680-½ 456 (500-½)		1680-⅞ 456 (500-⅞)	1680-1 456 (500-1)
 CIRCLING	1760-1 528 (600-1)		1760-1½ 528 (600-1½)	1860-2 628 (700-2)

NC-1, 31 DEC 2020 to 28 JAN 2021

NC-1, 31 DEC 2020 to 28 JAN 2021