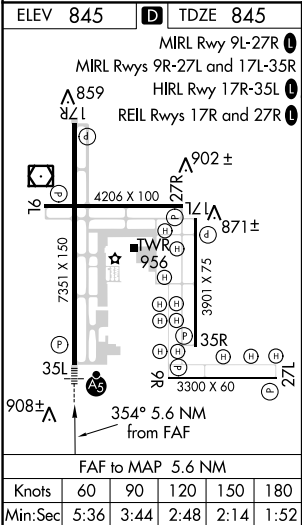
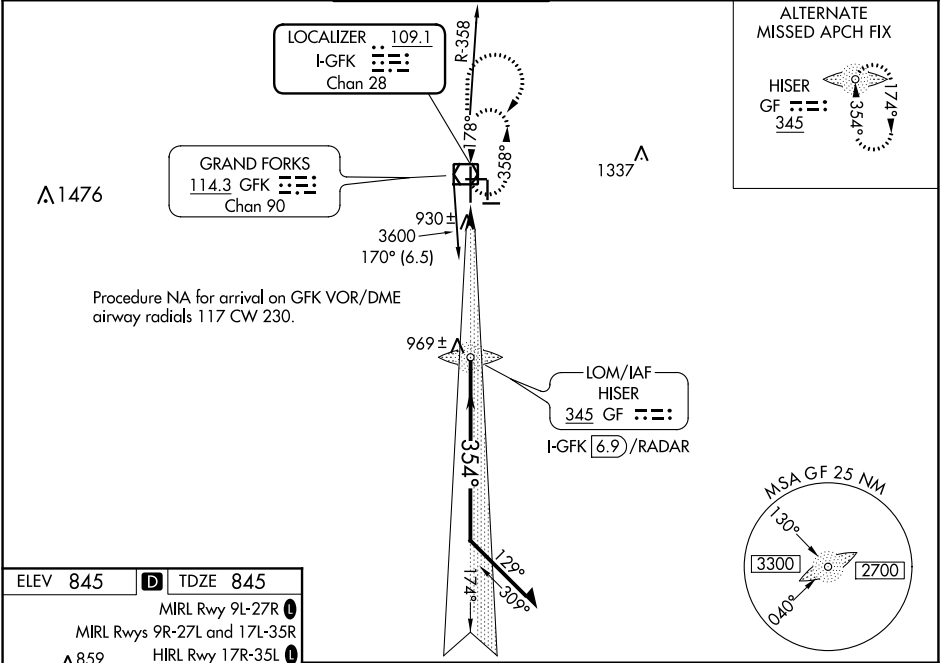







LOC/DME I-GFK	APP CRS	Rwy Idg	7351
109.1	354°	TDZE	845
Chan 28		Apt Elev	845

ILS or LOC RWY 35L

GRAND FORKS INTL (GFK)

ADF or DME or RADAR REQUIRED.				MALSR		MISSED APPROACH: Climb to 3600 then right turn direct GFK VOR/DME and hold.
VDP NA with Crookston altimeter setting. When local altimeter setting not received, use Crookston altimeter setting and increase DA to 1107 feet and all MDA 80 feet; increase S-LOC 35L Cats C/D/E visibility to RVR 4000 and Circling Cats C and E visibility ¼ SM. For inop ALS, increase S-ILS 35L Cat E visibility to RVR 4000 and S-LOC 35L Cat E visibility to RVR 5000. For inop ALS when using Crookston altimeter setting, increase S-ILS 35L all Cats visibility to RVR 4500 and S-LOC 35L Cat C/D/E visibility to RVR 6000. Procedure turn NA for Cat E aircraft, Radar required.						
ATIS	GRAND FORKS APP CON	GRAND FORKS TOWER	GND CON	CLNC DEL	UNICOM	
119.4	118.1 318.1	118.4 (CTAF) 350.35	124.575	135.725	122.95	



3600 ↑				GFK 		GF HISER LOM I-GFK 6.9 /RADAR		Remain within 10 NM	
* LOC only.		* I-GFK 2.3		2536		174°		2600	
 I-GFK 1.4				2600		354°		GS 2.76° TCH 61	
0.9 NM		4.6 NM							
CATEGORY	A	B	C	D	E				
S-ILS 35L	1045/24 200 (200-½)								
S-LOC 35L	1180/24	335 (400-½)	1180/26	335 (400-½)					
 CIRCLING	1260-1 415 (500-1)	1300-1 455 (500-1)	1400-1½ 555 (600-1½)	1400-2 555 (600-2)	1520-2½ 675 (700-2½)				