

WAAS CH 78104 W27A	APP CRS 264°	Rwy Idg 4206 TDZE 843 Apt Elev 845
--	------------------------	---

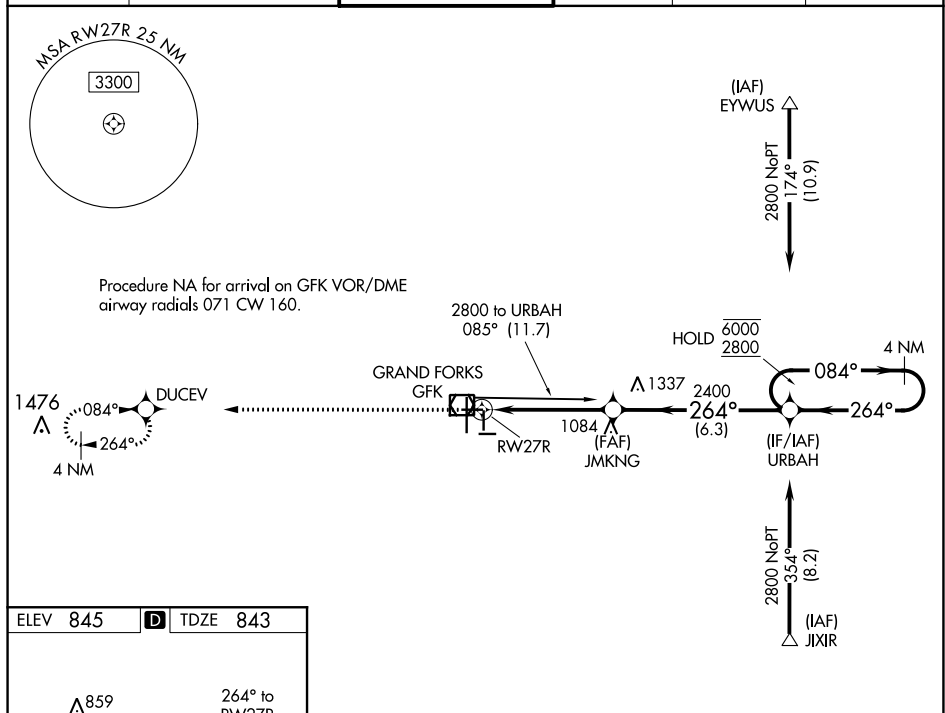
RNAV (GPS) RWY 27R
GRAND FORKS INTL (GFK)

RNP APCH.

- T** VDP NA when using Crookston altimeter setting.
A When local altimeter setting not received, use Crookston altimeter setting and increase all DA 62 feet and all MDA 80 feet. Increase LNAV and Circling Cat C and D visibility $\frac{1}{4}$ SM.

MISSED APPROACH: Climb to 4000 direct DUCV and hold, continue climb-in-hold to 4000.

ATIS 119.4	GRAND FORKS APP CON ★ 118.1 318.1	GRAND FORKS TOWER★ 118.4(CTAF)0 350.35	GND CON 124.575	CLNC DEL 135.725	UNICOM 122.95
---------------	--------------------------------------	---	--------------------	---------------------	------------------

[illegible]

<div style="display: flex; justify-content: space-around; align-items: center;"> <div style="text-align: center;"> 4000 </div> <div style="text-align: center;"> DUCEV </div> </div>					
CATEGORY		A	B	C	D
LPV	DA	1093-1 250 (300-1)			
LNAB	MDA	1460-1 617 (700-1)	1460-1 ³ / ₄ 617 (700-1 ³ / ₄)	1460-2 617 (700-2)	
C CIRCLING		1460-1 615 (700-1)	1460-1 ³ / ₄ 615 (700-1 ³ / ₄)	1460-2 615 (700-2)	