

WAAS CH 58104 W09A	APP CRS 084°	Rwy Idg TDZE Apt Elev	4206 843 845
--	------------------------	-----------------------------	---

RNAV (GPS) RWY 9L
GRAND FORKS INTL (GFK)

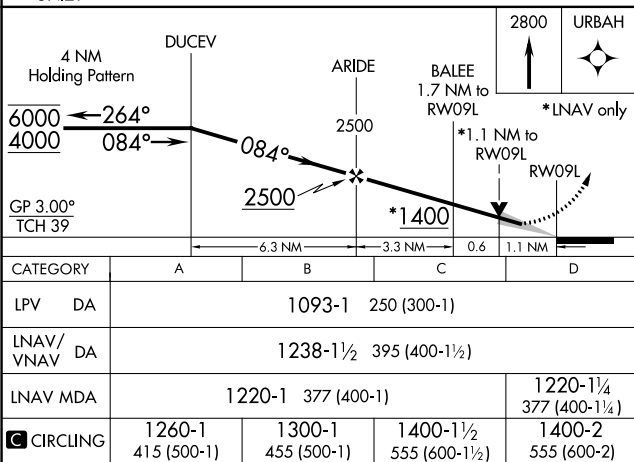
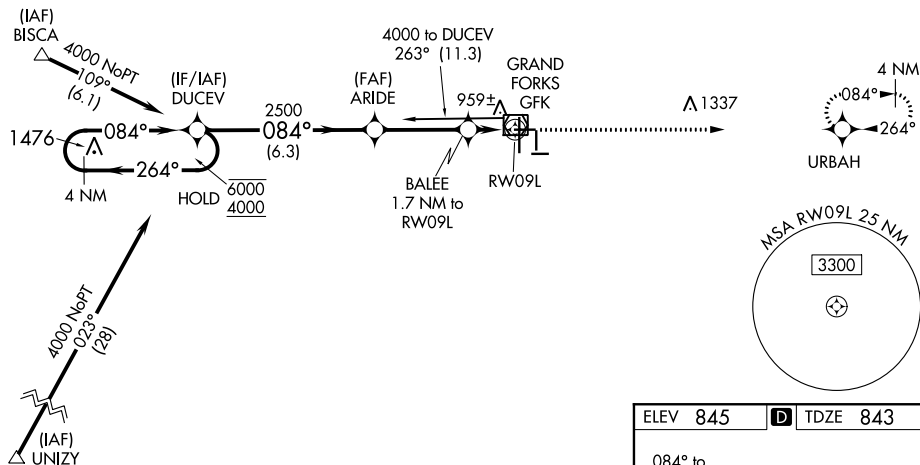
RNP APCH.


- A** For uncompensated Baro-VNAV systems, LNAV/VNAV NA below -16°C or above 54°C. When local altimeter setting not received, use Crockston altimeter setting and increase all DA 62 feet and all MDA 80 feet, increase LNAV Cat C visibility $\frac{3}{8}$ SM, Cat D visibility $\frac{1}{8}$ SM and Circling Cat C $\frac{1}{4}$ SM.

MISSED APPROACH: Climb to 2800 direct
URBAH and hold.

ATIS 119.4	GRAND FORKS APP CON★ 118.1 318.1	GRAND FORKS TOWER★ 118.4(CTAF)0 350.35	GND CON 124.575	CLNC DEL 135.725	UNICOM 122.95
----------------------	--	--	---------------------------	----------------------------	-------------------------

Procedure NA for arrivals
at GFK VOR/DME
on V55 northeast bound.



CATEGORY	A	B	C	D
LPV DA	1093-1 250 (300-1)			
LNAV/ VNAV DA	1238-1½ 395 (400-1½)			
LNAV MDA	1220-1 377 (400-1)			1220-1¼ 377 (400-1¼)
 CIRCLING	1260-1 415 (500-1)	1300-1 455 (500-1)	1400-1½ 555 (600-1½)	1400-2 555 (600-2)

