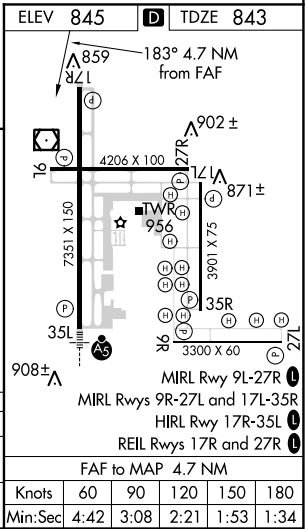
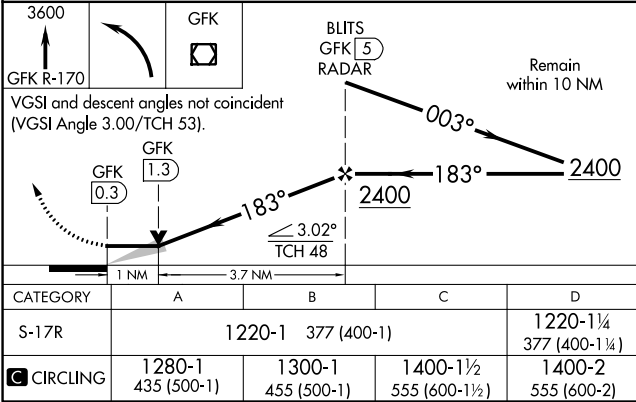
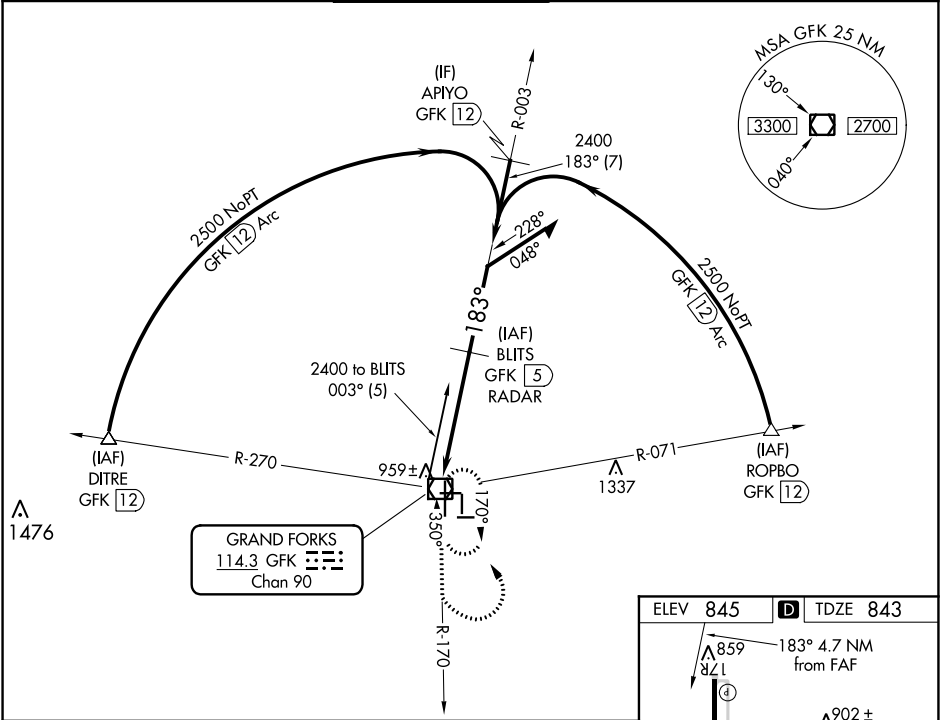


VOR/DME GFK	APP CRS	Rwy Idg	7351
114.3	183°	TDZE	843
Chan 90		Apt Elev	845

VOR RWY 17R
GRAND FORKS INTL (GFK)

DME or RADAR required.	MISSED APPROACH: Climb to 3600 on GFK VOR/DME R-170 then left turn direct GFK VOR/DME and hold.
▼ When local altimeter setting not received, use Crookston altimeter setting and increase all MDAs 80 feet; Increase Cat C/D visibility to 1 3/4 SM and Circling Cat C visibility 1/4 SM. VDP NA with Crookston altimeter setting.	

ATIS 119.4	GRAND FORKS APP CON ★ 118.1 318.1	GRAND FORKS TOWER★ 118.4(CTAF) 350.35	GND CON 124.575	CLNC DEL 135.725	UNICOM 122.95
----------------------	---	---	---------------------------	----------------------------	-------------------------



NC-1, 31 DEC 2020 to 28 JAN 2021

NC-1, 31 DEC 2020 to 28 JAN 2021