

LOC/DME I-SGS 108.35 Chan 20 (Y)	APP CRS 342°	Rwy Idg 4002 TDZE 820 Apt Elev 821
--	------------------------	---

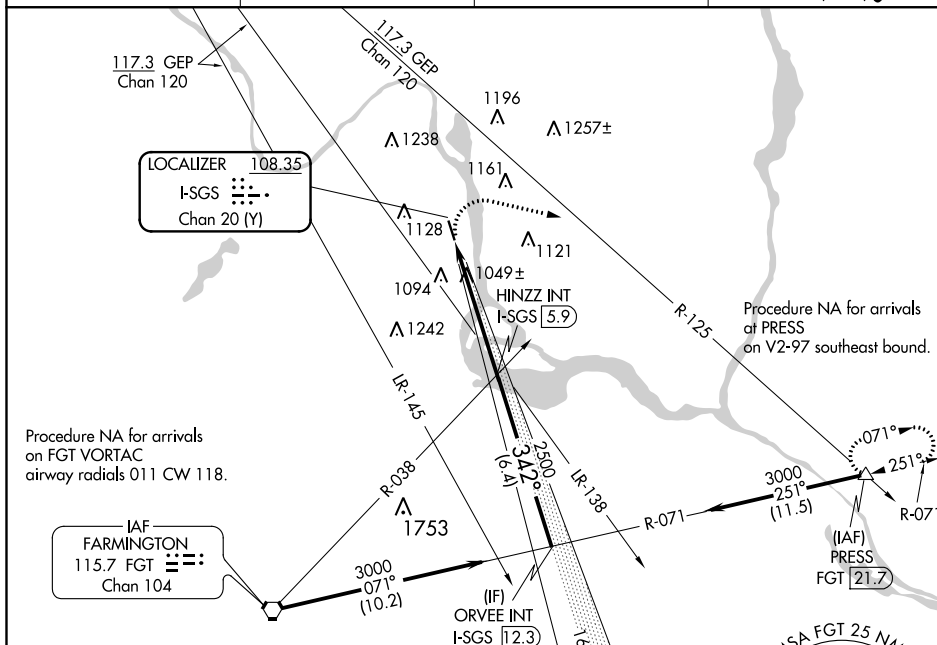
LOC RWY 34

SOUTH ST PAUL MUNI-RICHARD E FLEMING FIELD (SGS)

T Helicopter visibility reduction below $\frac{3}{4}$ SM NA. When local
A altimeter setting not received, use Minneapolis-St Paul Intl/
 NA Wold-Chamberlain altimeter setting and increase all MDA
 40 feet. Increase Circling Cat C/D visibility $\frac{1}{4}$ mile.

MISSED APPROACH: Climbing right turn to 3000 on heading 100° and on GEP VORTAC R-125 to PRESS INT/21.7 DME and hold.

AWOS-3 119.425	MINNEAPOLIS APP CON 121.2 335.65	CLNC DEL 118.2	UNICOM 122.7 (CTAF) 0
--------------------------	--	--------------------------	--



ELEV 821		TDZE 820
----------	--	----------

