

WAAS CH 99636 W34A	APP CRS 342°	Rwy Idg 4002 TDZE 820 Apt Elev 821
--	------------------------	---

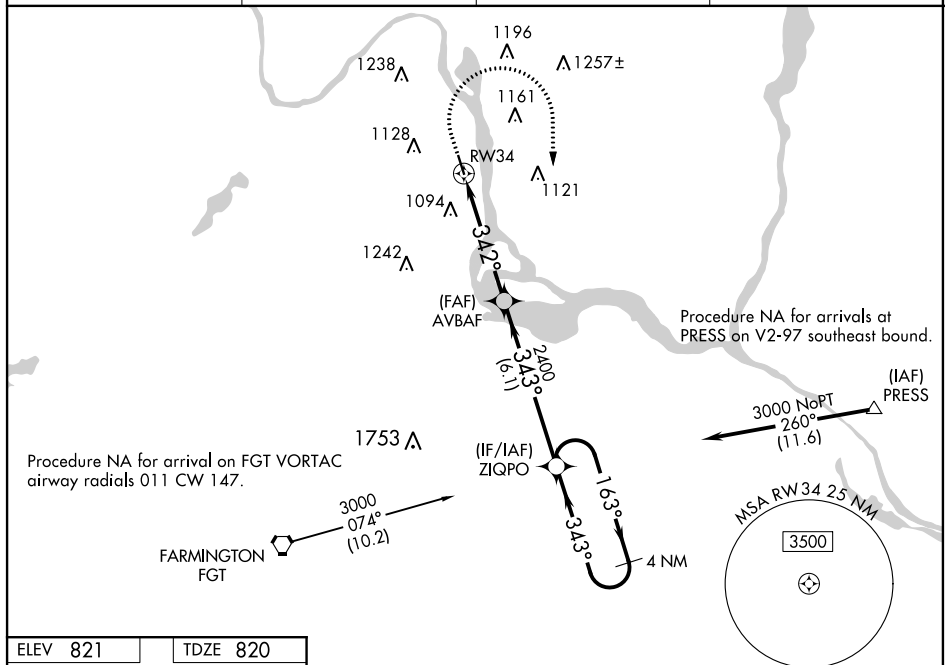
RNAV (GPS) RWY 34

SOUTH ST PAUL MUNI-RICHARD E FLEMING FIELD (SGS)

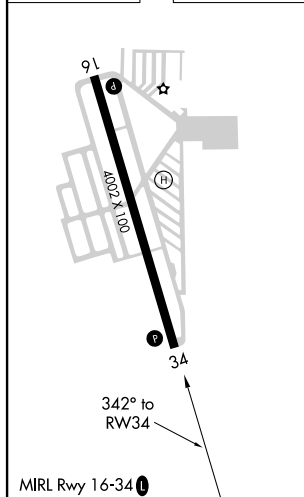
T For uncompensated Baro-VNAV systems, LNAV-VNAV NA below -22°C (-7°F) or above 54°C (130°F). Rwy 34 helicopter visibility reduction below ¾ SM NA. DME/DME RNP-0.3 NA.

MISSED APPROACH: Climb to 1400 then climbing right turn to 3000 direct ZIQPO and hold.

AWOS-3 119.425	MINNEAPOLIS APP CON 121.2 335.65	CLNC DEL 118.2	UNICOM 122.7 (CTAF) 0
--------------------------	--	--------------------------	---------------------------------



ELEV 821		TDZE 820
----------	--	----------



*** LNAV only.**

4 NM Holding Pattern

ZIQUPO

AVBAF

RW34

1.4

3.5 NM

6.1 NM

342°

343°

163°

3000

**GP 3.00
TCH 36**

CATEGORY	A	B	C	D
LPV DA	1102- $\frac{7}{8}$		282 (300- $\frac{7}{8}$)	
VNAV/ VNAV DA	1378-1 $\frac{5}{8}$		558 (600-1 $\frac{5}{8}$)	
LNAV MDA	1300-1	480 (500-1)	1300-1 $\frac{3}{8}$	480 (500-1 $\frac{3}{8}$)
CIRCLING	1400-1 579 (600-1)	1540-1 719 (800-1)	1540-2 719 (800-2)	1620-2 $\frac{1}{2}$ 799 (800-2 $\frac{1}{2}$)