

WAAS CH 86610 W30A	APP CRS 304°	Rwy Idg TDZE 1024 Apt Elev 1024	4001
--	------------------------	---	-------------

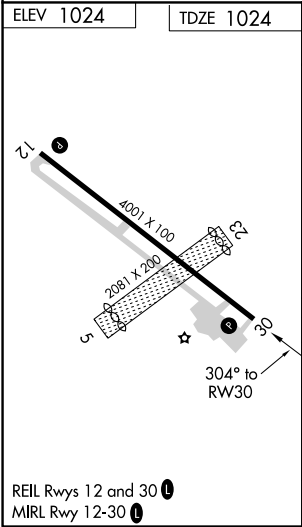
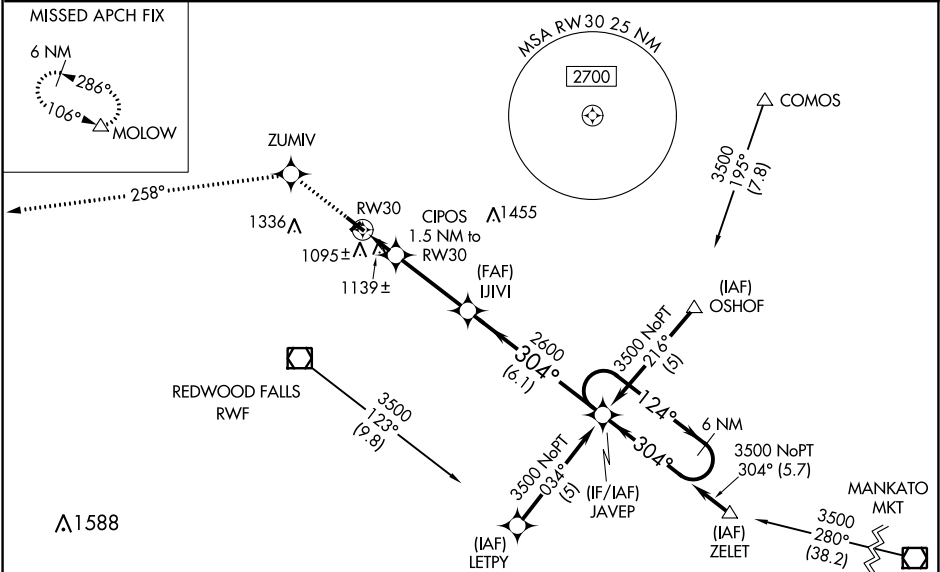
RNAV (GPS) RWY 30

REDWOOD FALLS MUNI (RWF)

⚠ DME/DME RNP-0.3 NA. Visibility reduction by helicopters NA.
⚠ For uncompensated Baro-VNAV systems, LNAV/VNAV NA below -17°C (2°F) or above 46°C (114°F).
Baro-VNAV NA when using Olivia Rgnl altimeter setting.
When local altimeter setting not received, use Olivia Rgnl altimeter setting and increase all DA/MDA 40 feet and LNAV Cat C visibility ¼ mile.

MISSED APPROACH: Climb to 3800 direct ZUMIV and via 258° track to MOLOW and hold.

ASOS 126.575	MINNEAPOLIS CENTER 127.1 290.2	UNICOM 123.0 (CTAF) 0
------------------------	--	---------------------------------



ELEV 1024		TDZE 1024	
3800		ZUMIV	258° tr
*LNAV only		CIPOS 1.5 NM to RW30	IJIVI
RW30		1540*	2600
1.5 NM		3.3 NM	6.1 NM
CATEGORY	A	B	C
LPV DA	1304-1	280 (300-1)	
LNAV/VNAV DA	1440-1½	416 (500-1½)	
LNAV MDA	1400-1	376 (400-1)	1400-1¼
CIRCLING	1480-1	1580-1	1580-1½
	456 (500-1)	556 (600-1)	556 (600-1½)
			1700-2¼
			676 (700-2¼)