


WAAS CH <b>69311</b> <b>W31A</b>	APP CRS <b>313°</b>	Rwy Idg TDZE <b>1114</b> Apt Elev <b>1119</b>	<b>6304</b> <b>1114</b> <b>1119</b>
--	------------------------	---	---

RNAV (GPS) RWY 31

THIEF RIVER FALLS RGNL (TVF)

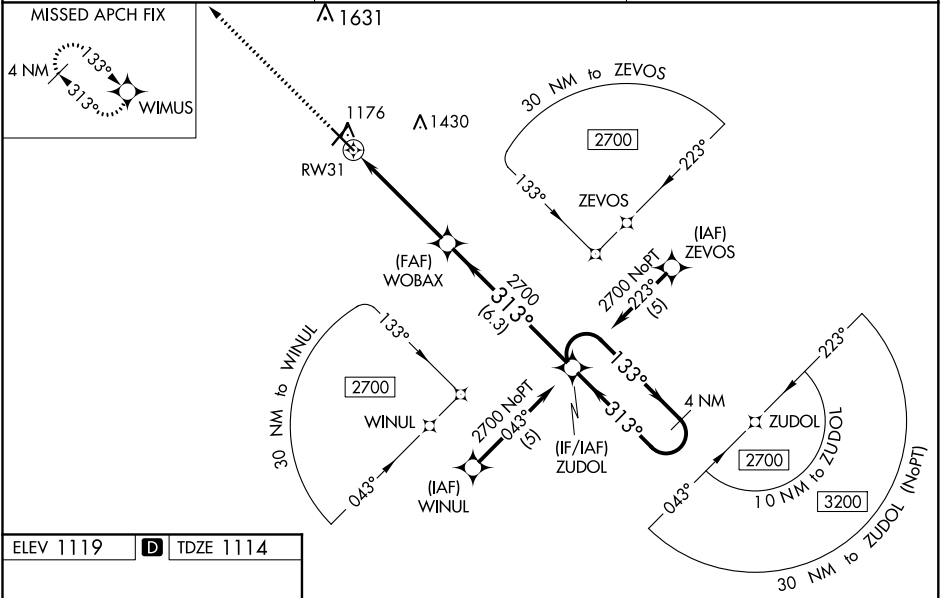
**⚠** Baro-VNAV and VDP NA when using Crockston altimeter setting. For uncompensated Baro-VNAV systems, LNAV/VNAV NA below -17°C (2°F) or above 54°C (130°F). DME/DME RNP-0.3 NA. When local altimeter setting not received, use Crockston altimeter setting: increase LPV DA to 1446 feet and all visibilities  $\frac{1}{8}$  SM; increase LNAV/VNAV DA to 1510 feet and all visibilities  $\frac{3}{8}$  SM; increase all MDAs 100 feet and visibility Cats C and D  $\frac{1}{4}$  SM. For inoperative MALSR, increase LNAV Cats C/D visibility to  $\frac{1}{8}$  mile. For inoperative MALSR, when using Crockston altimeter setting, increase LPV all Cats visibility to  $\frac{1}{8}$  mile, LNAV/VNAV all Cats visibility to  $\frac{1}{4}$  mile, LNAV Cats C/D visibility to  $\frac{1}{8}$  mile.

MALSR

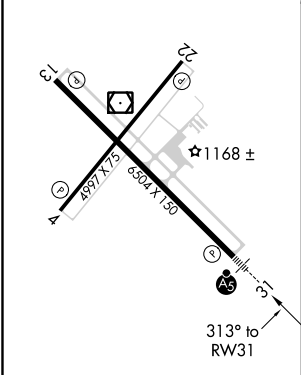


MISSED APPROACH:  
Climb to 2700 direct WIMUS and hold.

AWOS-3PT <b>119.025</b>	MINNEAPOLIS CENTER <b>132.15 269.6</b>	UNICOM <b>122.8 (CTAF)</b> <b>1</b>
----------------------------	---	--




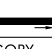
ELEV 1119 **D** TDZE 1114



HIRL Rwy 13-31 **1**

MIRL Rwy 4-22 **1**

REIL Rwy 4, 13 and 22 **1**

	2700	WIMUS	WOBAX	ZUDOL	4 NM Holding Pattern
					
		* LNAV only	* 1.3 NM to RW31		
					
		1.3 NM	3.5 NM	6.3 NM	
CATEGORY	A	B	C	D	
LPV DA	1364- $\frac{1}{2}$		250 (300- $\frac{1}{2}$ )		
LNAV/VNAV DA	1428- $\frac{1}{2}$		314 (400- $\frac{1}{2}$ )		
LNAV MDA	1580- $\frac{1}{2}$		1580-1 466 (500-1)		
<b>C</b> CIRCLING	1580-1 461 (500-1)		1820-2 701 (800-2) 1980-2 $\frac{3}{4}$ 861 (900-2 $\frac{3}{4}$ )		