

WAAS CH <b>70636</b> <b>W04A</b>	APP CRS <b>037°</b>	Rwy Idg TDZE <b>1116</b> Apt Elev <b>1119</b>	<b>4997</b> <b>1116</b> <b>1119</b>
--	------------------------	---	---

RNAV (GPS) RWY 4

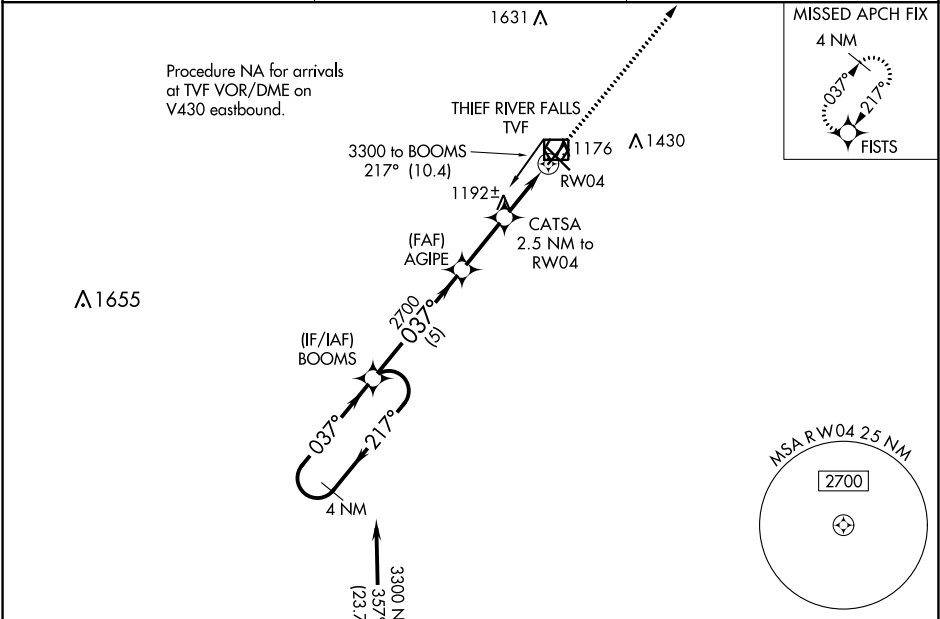
THIEF RIVER FALLS RGNL (TVF)

⚠

Baro-VNAV and VDP NA when using Crookston altimeter setting. For uncompensated Baro-VNAV systems, LNAV/VNAV NA below -17°C (2°F) or above 54°C (130°F). DME/DME RNP-0.3 NA. Helicopter visibility reduction below ¾ SM NA. When local altimeter setting not received, use Crookston altimeter setting and increase all DA 82 feet and all MDA 100 feet. Increase LPV and LNAV/VNAV all Cats visibility to 1½ mile.

MISSED APPROACH:  
Climb to 3300 direct FISTS and hold.

AWOS-3PT <b>119.025</b>	MINNEAPOLIS CENTER <b>132.15 269.6</b>	UNICOM <b>122.8 (CTAF) 0</b>
----------------------------	---	---------------------------------



ELEV 1119 **D** TDZE 1116

GP 3.00° TCH 40

4 NM Holding Pattern

BOOMS

3300 217° 037°

AGIPE 2700

CATSA 2.5 NM to RW04

\*1 NM to RW04

RW04

\*1940

5 NM 2.4 NM 1.5 NM 1 NM

VGSI and RNAV glidepath not coincident (VGSI Angle 3.00/TCH 34).

3300 FISTS

\*LNAV only

037° to RW04

1168±

4997 X 130 6304 X 130

037° to RW04

CATEGORY	A	B	C	D
LPV DA	1366-1	250 (300-1)		NA
LNAV/VNAV DA	1366-1	250 (300-1)		NA
LNAV MDA	1460-1	344 (400-1)		NA
<b>CIRCLING</b>	1540-1 421 (500-1)	1580-1 461 (500-1)		NA

HIRL Rwy 13-31 **0**  
MIRL Rwy 4-22 **0**  
REIL Rws 4, 13 and 22 **0**