

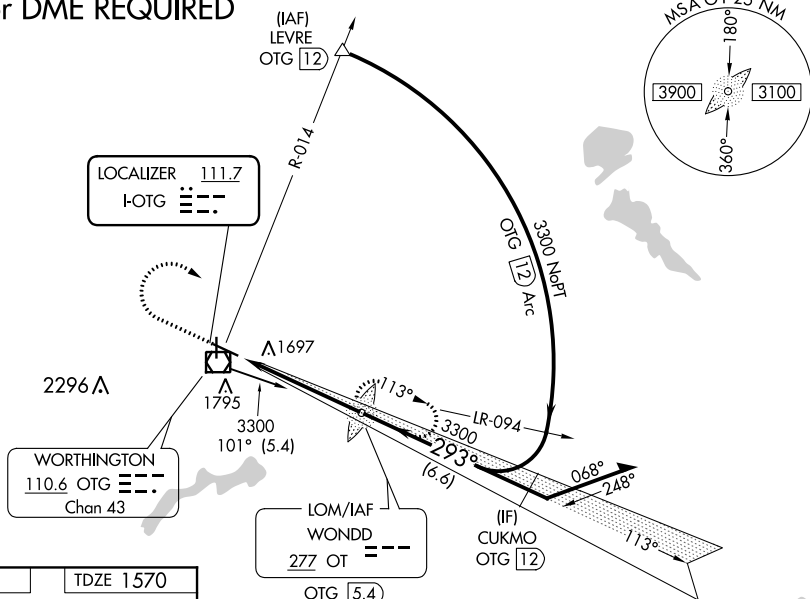
ILS or LOC RWY 29
WORTHINGTON MUNI (OTG)

MALSR

MISSED APPROACH: Climb to 2500 then climbing right turn to 3300 direct WONDD LOM/OTG 5.4 DME and hold.

UNICOM
122.8 (CTAF) **L**

ADF or DME REQUIRED



ELEV 1574

TDZE 1570

Diagram illustrating the FAF to MAP segment of the approach. The diagram shows a vertical runway (18-36) and a diagonal FAF line. Key points include 81, 4200 X 75, 36, 5500 X 100, and 293° 4.9 NM from FAF.

MIRL Rwy 18-36 **L**
HIRL Rwy 11-29 **L**
REIL Rwy 11, 18, and 36 **L**

FAF to MAP 4.9 NM

Knots	60	90	120	150	180
Min:Sec	4:54	3:16	2:27	1:58	1:38

2500 3300 OT

OT LOM OTG 5.4

Remain within 10 NM

VGSI and ILS glidepath not coincident (VGSI Angle 3.00/TCH 43)

3205 113° 293° 3300

GS 3.00° TCH 53

4.9 NM

CATEGORY	A	B	C	D
S-ILS 29	1770- $\frac{1}{2}$ 200 (200- $\frac{1}{2}$)			
S-LOC 29	2000- $\frac{1}{2}$ 430 (500- $\frac{1}{2}$)		2000- $\frac{3}{4}$ 430 (500- $\frac{3}{4}$)	
CIRCLING	2100-1 526 (600-1)		2100-1 $\frac{1}{2}$ 526 (600-1 $\frac{1}{2}$)	2140-2 566 (600-2)

NC-1, 31 DEC 2020 to 28 JAN 2021