

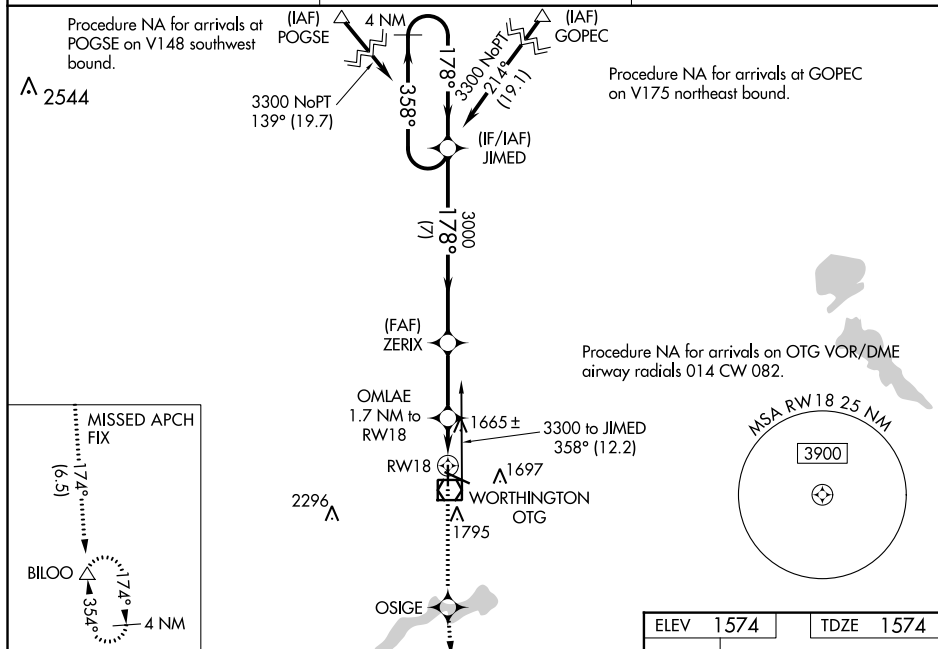
WAAS CH 93830 W18A	APP CRS 178°	Rwy Idg 4200 TDZE 1574 Apt Elev 1574
--	------------------------	---

RNAV (GPS) RWY 18
WORTHINGTON MUNI (OTG)

⚠ Baro-VNAV NA when using Jackson altimeter setting. For uncompensated Baro-VNAV systems, LNAV/VNAV NA below -18°C (0°F) or above 54°C (130°F). DME/DME RNP-0.3 NA. VDP NA with Jackson altimeter setting. When local altimeter setting not received, use Jackson altimeter setting and increase all DA 78 feet and all MDA 80 feet, increase LPV and LNAV/VNAV all Cats, LNAV Cat C/D, and Circling Cat C visibility ¼ mile.

MISSED APPROACH: Climb to 3300 direct OSIGE and on track 174° to BILOO and hold.

AWOS-3PT 121.075	MINNEAPOLIS CENTER 132.05 317.4	UNICOM 122.8 (CTAF) 0
----------------------------	---	--



STAR Procedure Diagram:

- JIMED**: 4 NM Holding Pattern, 3300 ft.
- ZERIX**: 3000 ft, 178° turn.
- OMLAE**: 1.7 NM to RW18, 174° turn.
- RW18**: Final destination, 1 NM from OMLAE.
- Distances**: 7 NM (JIMED to ZERIX), 2.7 NM (ZERIX to OMLAE), 0.7 NM (OMLAE to RW18).
- Altitudes**: 3300 ft (Holding Pattern), 3000 ft (ZERIX), 2140 ft (OMLAE/RW18).
- Other Symbols**: OSIGE, BILOO, tr 174°, *LNAV only.

CATEGORY	A	B	C	D
LPV DA	1774-1 200 (200-1)			
LNAV/VNAV DA	1824-1 250 (300-1)			
LNAV MDA	1920-1 346 (400-1)			
CIRCLING	2100-1 526 (600-1)	2100-1½ 526 (600-1½)		2140-2 566 (600-2)