

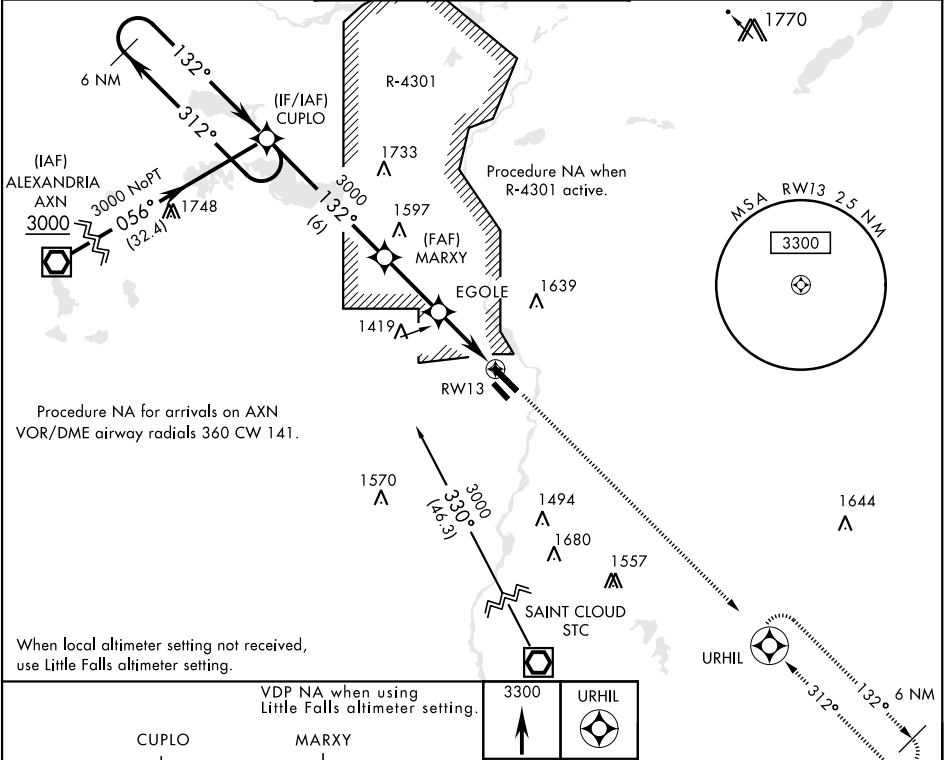
RNAV (GPS) RWY 13

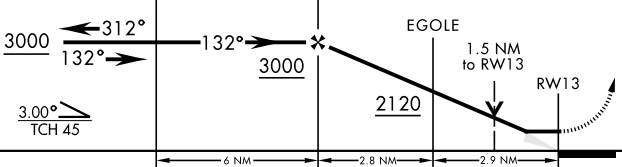


APCH CRS	Rwy Idg	6100
132°	TDZE	1150
	Arpt Elev	1150

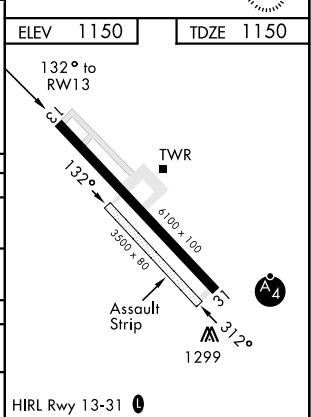
AL-5226 [USA]

RAY S. MILLER AAF (KRYM)

NA	RNP APCH	MISSED APPROACH: Climb to 3300 direct URHIL and hold.
MINNEAPOLIS CENTER	MILLER TOWER ★	CLNC DEL
118.05 239.0	126.2 0 254.4 46.7	126.2



				
CATEGORY	A	B	C	D
LNAV MDA	1680-1	530 (600-1)	1680-1½	530 (600-1½)
 CIRCLING	1680-1	530 (600-1)	1720-1½ 570 (600-1½)	2080-3 930 (1000-3)
LITTLE FALLS ALTIMETER SETTING				
LNAV MDA	1720-1	570 (600-1)	1720-1½	570 (600-1½)
 CIRCLING	1720-1	570 (600-1)	1760-1¾ 610 (700-1¾)	2120-3 970 (1000-3)



RNAV (GPS) RWY 13

NC-1, 31 DEC 2020 to 28 JAN 2021

NC-1, 31 DEC 2020 to 28 JAN 2021