

RNAV (GPS) RWY 31

APCH CRS **312°** Rwy Idg **6100**
THRE **1146**
Arpt Elev **1150**

AL-5226 [USA]

RAY S. MILLER AAF (KRYM)

T * When ALS inop, increase CAT D vis to 1¼ miles.

A NA DME/DME RNP-0.3 NA.

MALSF

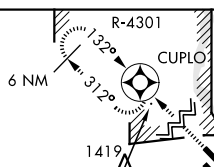


MISSED APPROACH: Climb to 3000 direct CUPLO and hold.

MINNEAPOLIS CENTER
118.05 239.0

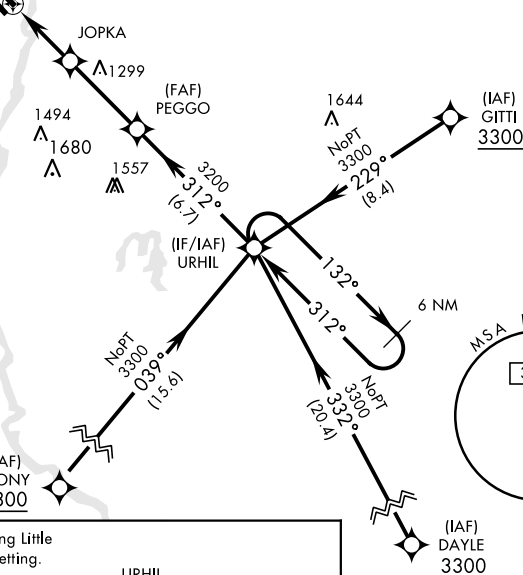
MILLER TOWER ★
126.2 0 254.4 46.7

CLNC DEL
126.2



Procedure NA when R-4301 is active.

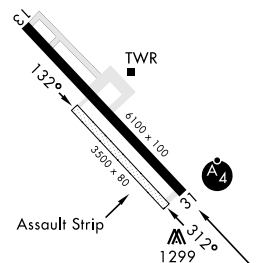
When local altimeter setting not received, use Little Falls altimeter setting.



<div> <div>3000</div> <div>CUPLO</div> <div>VDP NA when using Little Falls altimeter setting.</div> </div>				
<div> <div>1.3 NM to RW31</div> <div>RW31</div> <div>JOPKA</div> <div>PEGGO</div> <div>URHIL</div> <div>3200</div> <div>312°</div> <div>132°</div> <div>3300</div> <div>2100</div> <div>2.9 NM</div> <div>3.4 NM</div> <div>3.00°</div> <div>TCH 38</div> </div>				
CATEGORY	A		B	
LNAV MDA *	1580-¾	434	(500-¾)	1580-1
CIRCLING	1640-1 490 (500-1)	1660-1 510 (600-1)	1720-1½ 570 (600-1½)	2080-3 930 (1000-3)
LITTLE FALLS ALTIMETER SETTING				
LNAV MDA *	1620-¾	474	(500-¾)	1620-1½
CIRCLING	1680-1	530	(600-1)	1760-1¾
				2120-3

ELEV 1150

THRE 1146



HIRL Rwy 13-31 0 312° 6.3 NM from FAF

RNAV (GPS) RWY 31