

WAAS CH 70700 W31A	APP CRS 310°	Rwy Idg 6700 TDZE 1304 Apt Elev 1304
--	------------------------	---

RNAV (GPS) RWY 31

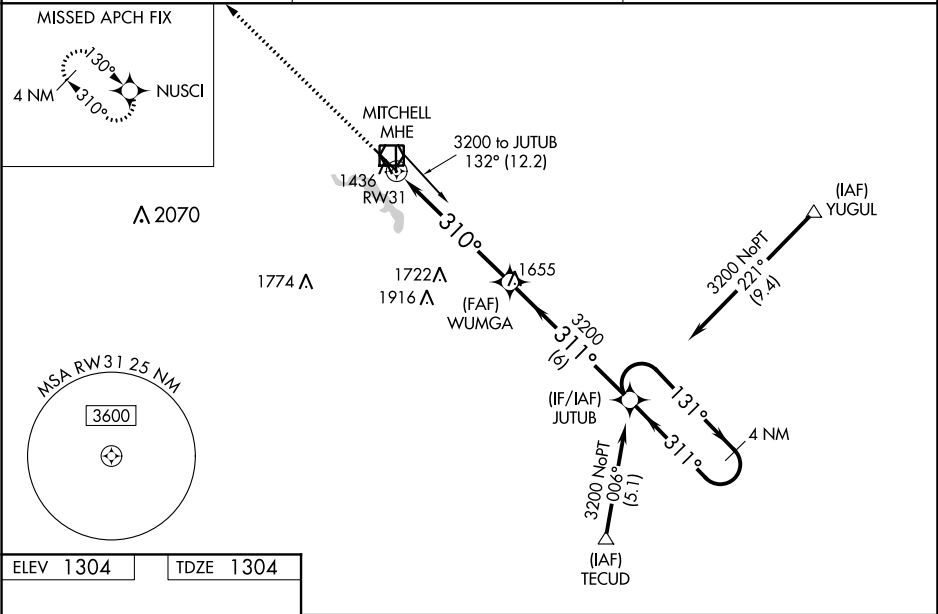
MITCHELL MUNI (MHE)

For uncompensated Baro-VNAV systems, LNAV-VNAV NA below -16°C (4°F) or above 54°C (130°F). Baro-VNAV and VDP NA when using Huron Rgnl altimeter setting. DME/DME RNP-0.3 NA. When local altimeter setting not received, use Huron Rgnl altimeter setting and increase all DA 89 feet and all MDA 100 feet. Increase LPV all Cats visibility 1⁄8 mile. Increase LNAV/VNAV all Cats, LNAV Cats C/D and Circling Cat C visibility 1⁄4 mile. For inop MALSR, increase LNAV/VNAV all Cats visibility to 1 mile and LNAV Cats C/D to 1 3⁄8 mile. For inop MALSR when using Huron Rgnl altimeter setting, increase LPV all Cats visibility to 1 1⁄8 mile.

MALSR

MISSED APPROACH:
Climb to 3500 direct NUSCI and hold.

ASOS 124.175	MINNEAPOLIS CENTER 126.25 339.8	UNICOM 122.8 (CTAF) 0
------------------------	---	---------------------------------



ELEV **1304**

TDZE **1304**

3500

NUSCI

VGSI and RNAV glidepath not coincident (VGSI Angle 3.00/TCH 61).

*LNAV only

3200

WUMGA

311°

3200

310°

311°

3200

4 NM Holding Pattern

GP 3.00°

TCH 57

*1.4 NM to RW31

1.4

4.3 NM

6 NM

CATEGORY	A	B	C	D
LPV DA	1554-1⁄2 250 (300-1⁄2)			
LNAV/VNAV DA	1625-5⁄8 321 (400-5⁄8)			
LNAV MDA	1800-1⁄2 496 (500-1⁄2)		1800-1 496 (500-1)	
CIRCLING	1800-1 496 (500-1)		1820-1 1⁄2 516 (600-1 1⁄2)	1860-2 556 (600-2)

81

6700 X 100

5513 X 100

0.4% UP

1435

36

310° to RW31

1375 ±

1364 ±

HIRL Rwy 13-31

MIRL Rwy 18-36

REIL Rwy 13 and 18