

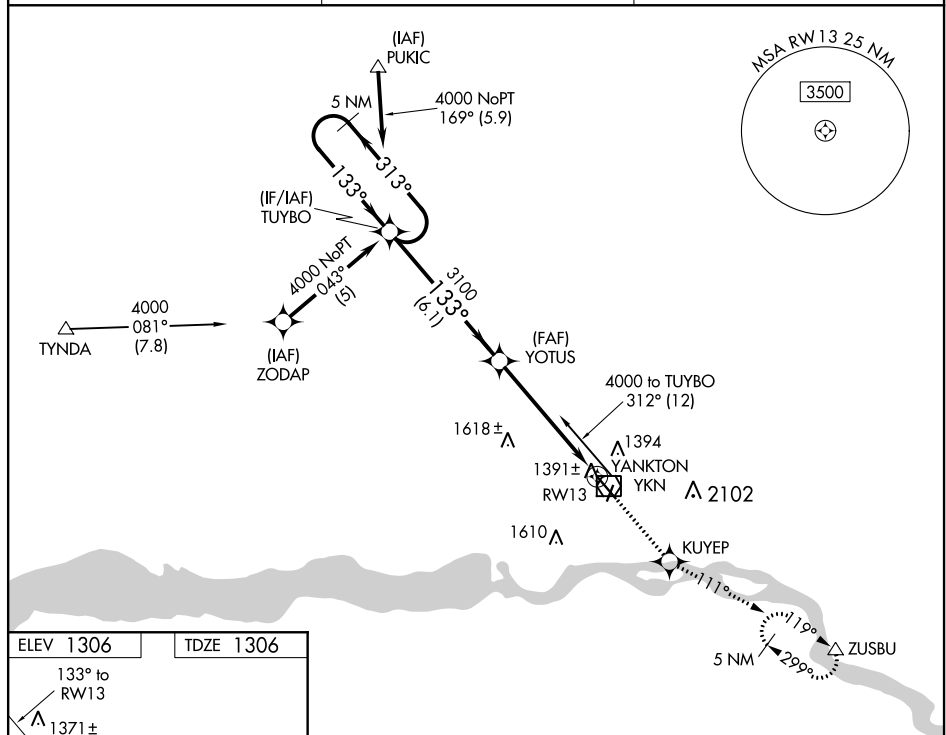
WAAS CH <b>50400</b> <b>W13A</b>	APP CRS <b>133°</b>	Rwy Idg <b>6095</b> TDZE <b>1306</b> Apt Elev <b>1306</b>
--	------------------------	---

RNAV (GPS) RWY 13  
CHAN GURNEY MUNI (YKN)

**T** If local altimeter setting not received, use Sioux Falls altimeter setting and increase all DAs/MDAs 140 feet.  
**A** DME/DME RNP -0.3 NA.  
Visibility reduction by helicopters NA.

**MISSED APPROACH:** Climb to 4000 direct KUYEP and via 111° track to ZUSBU and hold, continue climb-in-hold to 4000.

AWOS-3PT <b>119.05</b>	MINNEAPOLIS CENTER <b>125,025 235,625</b>	UNICOM <b>122.8 (CTAF) 0</b>
---------------------------	--	---------------------------------



5 NM Holding Pattern 		4000 ↑	KUYEP 	tr 111°	ZUSBU 
GP 3.00° TCH 40		* 1.1 NM to RW13 * LNAV only			
CATEGORY		A	B	C	D
LPV DA		1556-1 250 (300-1)			
LNAV MDA		1700-1 394 (400-1)			1700-1¼ 394 (400-1¼)
CIRCLING		1780-1 474 (500-1)		1780-1½ 474 (500-1½)	1860-2 554 (600-2)