

WAAS CH <b>50521</b> <b>W31A</b>	APP CRS <b>313°</b>	Rwy Idg TDZE <b>1285</b> Apt Elev <b>1306</b>	<b>6095</b>
--	------------------------	---	-------------

RNAV (GPS) RWY 31

CHAN GURNEY MUNI (YKN)

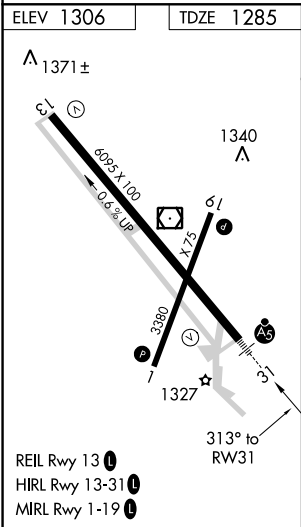
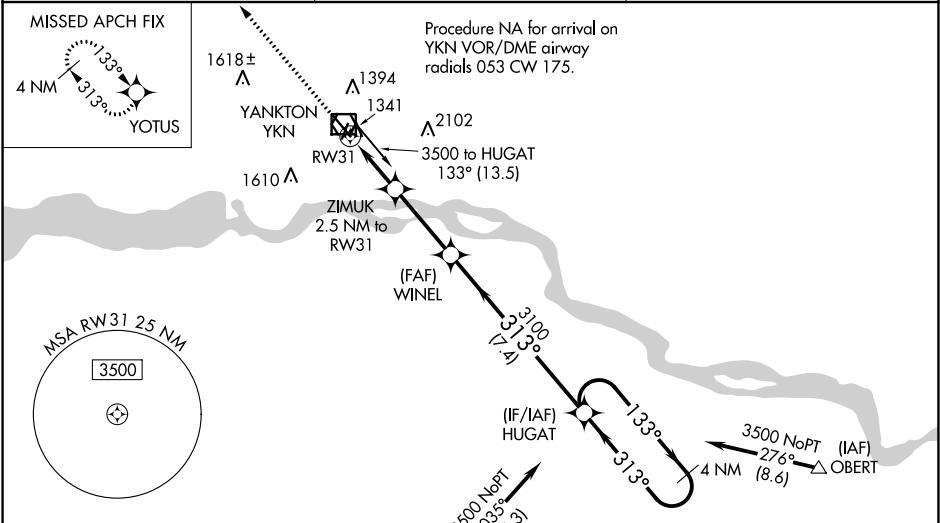
**⚠** When VGSI inoperative, Circling Rwy 19 NA at night. Baro-VNAV NA when using Sioux Falls altimeter setting. For uncompensated Baro-VNAV systems, LNAV/VNAV NA below -17°C (2°F) or above 35°C (95°F). DME/DME RNP-0.3 NA. VDP NA with Sioux Falls altimeter setting.

**⚠** When local altimeter setting not received, use Sioux Falls altimeter setting and increase all DA 130 feet and all MDA 140 feet. Increase LPV all Cats visibility  $\frac{1}{8}$  mile, LNAV/VNAV all Cats visibility  $\frac{1}{4}$  mile, LNAV Cats C and D visibility  $\frac{1}{2}$  mile and Circling Cats C and D visibility  $\frac{1}{4}$  mile. For inoperative MALSR when using Sioux Falls altimeter setting increase LPV visibility to  $\frac{1}{8}$  all Cats, LNAV/VNAV visibility to  $\frac{1}{4}$  all Cats, LNAV Cats C and D to  $\frac{1}{8}$  and increase Circling Cats C and D  $\frac{1}{4}$  mile.

**MALSR**

**MISSED APPROACH:**  
Climb to 3500 direct YOTUS and hold, continue climb-in-hold to 3500.

AWOS-3PT <b>119.05</b>	MINNEAPOLIS CENTER <b>125.025 235.625</b>	UNICOM <b>122.8 (CTAF) 0</b>
---------------------------	--	---------------------------------



3500 YOTUS		VGSI and RNAV glidepath not coincident (VGSI Angle 3.00/TCH 48).			
*LNAV only.		ZIMUK 2.5 NM to RW31	WINEL	HUGAT	4 NM Holding Pattern
*0.9 NM to RW31		3100	3100	133°	3500
RW31		2100*	3100	313°	GP 3.00° TCH 51
0.9		1.6	3.1 NM	7.4 NM	
CATEGORY	A	B	C	D	
LPV DA	1485- $\frac{1}{2}$		200 (200- $\frac{1}{2}$ )		
LNAV/ VNAV DA	1535- $\frac{1}{2}$		250 (300- $\frac{1}{2}$ )		
LNAV MDA	1600- $\frac{1}{2}$		315 (300- $\frac{1}{2}$ )		
CIRCLING	1780-1 474 (500-1)		1780-1 $\frac{1}{2}$ 474 (500-1 $\frac{1}{2}$ )		1860-2 554 (600-2)