

WAAS CH <b>57931</b> <b>W27A</b>	APP CRS <b>274°</b>	Rwy Idg TDZE <b>1372</b> Apt Elev <b>1376</b>	<b>4000</b> <b>1372</b> <b>1376</b>
--	------------------------	---	---

RNAV (GPS) RWY 27

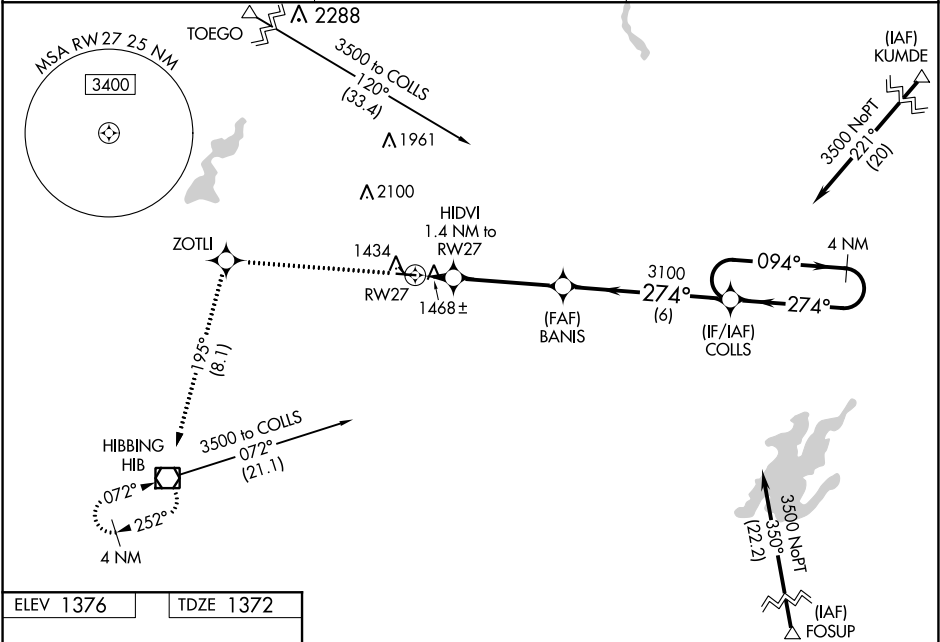
EVELETH-VIRGINIA MUNI (EVM)

⚠

Baro-VNAV NA when using Hibbing altimeter setting. For uncompensated Baro-VNAV systems, procedure NA below -17°C (2°F) or above 54°C (130°F). DME/DME RNP-0.3 NA. When local altimeter setting not received, use Hibbing altimeter setting and increase all DA 36 feet and all MDA 40 feet; increase LNAV Cat C/D visibility ½ and Circling Cat C/D visibility ¼ mile. Circling to Rwy 14 and 32 NA. Rwy 27 helicopter visibility reduction below ¾ SM NA.

MISSED APPROACH: Climb to 3600 direct ZOTU and on track 195° to HIB VOR/DME and hold.

AWOS-3 <b>108.2</b>	DULUTH APP CON <b>125.45 233.7</b>	UNICOM <b>122.7 (CTAF) 1</b>
------------------------	---------------------------------------	---------------------------------



ELEV 1376	TDZE 1372
-----------	-----------

3600

ZOTU

tr 195°

HIB

\*LNAV only

HIDVI 1.4 NM to RW27

BANIS 3100

COLLS

4 NM Holding Pattern

RW27

1840\*

3100

094°

274°

3500

GP 3.00°

TCH 41

1.4 NM

3.9 NM

6 NM

CATEGORY	A	B	C	D
LPV DA	1634-1½		262 (300-1½)	
LNAV/VNAV DA	1651-1		279 (300-1)	
LNAV MDA	1720-1		348 (400-1)	
CIRCLING	1880-1 504 (600-1)	1940-1 564 (600-1)	1940-1½ 564 (600-1½)	2040-2 664 (700-2)

MIRL Rwy 9-27 and 14-32 1  
REIL Rwy 27 1