

LOC I-GPZ 110.1	APP CRS 344°	Rwy Idg TDZE Apt Elev	5756 1356 1356
---------------------------	------------------------	-----------------------------	---

GRAND RAPIDS/ ILS or LOC RWY 34
ITASCA COUNTY-GORDON NEWSTROM FIELD (GPZ)

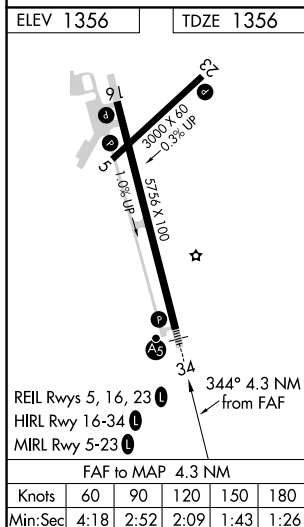
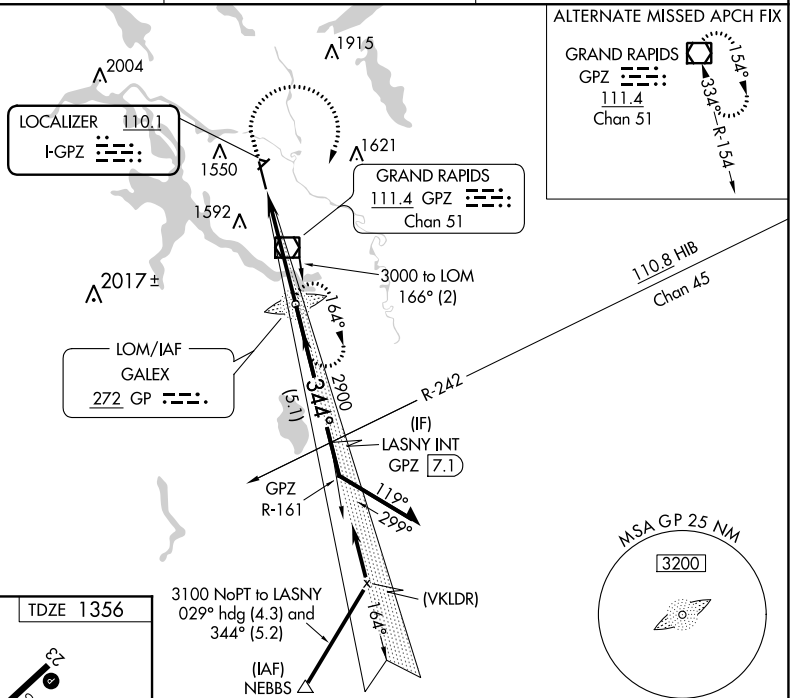
V Circling Rwy 5 NA at night. When local altimeter setting not received, use Hibbing altimeter setting: increase DA to 1624 feet, increase all MDAs 80 feet and visibility S-LOC 34 Cats C/D $\frac{1}{2}$ SM and Circling Cat C/D visibility $\frac{1}{4}$ SM. For inoperative ALS, when using Hibbing altimeter setting, increase S-ILS 34 visibility to $\frac{3}{4}$ SM. For inoperative ALS, increase S-LOC 34 Cats C/D visibility to 1 $\frac{1}{2}$ SM. Circling NA for Cat D east of Rwy 16-34.

MALSR



MISSED APPROACH:
Climb to 3100 then
right turn direct GALEX
LOM and hold (ADF
required).

AWOS-3PT 118.425	MINNEAPOLIS CENTER 127.9 281.45	UNICOM 122.8 (CTAF) 0
----------------------------	---	---------------------------------



<p>VGSI and ILS glidepath not coincident. (VGSI Angle 3.00/TCH 53)</p>	
CATEGORY	A B C D
S-ILS 34	1556-1/2 200 (200-1/2)
S-LOC 34	1820-1/2 464 (500-1/2) 1820-1 464 (500-1)
CIRCLING	1900-1 544 (600-1) 1900-1 1/2 544 (600-1 1/2) 2000-2 644 (700-2)