

WAAS CH <b>86412</b> <b>W34A</b>	APP CRS <b>344°</b>	Rwy Idg TDZE Apt Elev	<b>5756</b> <b>1356</b> <b>1356</b>
--	------------------------	-----------------------------	---

GRAND RAPIDS/  
ITASCA COUNTY-GORDON NEWSTROM FIELD (GPZ)

RNAV (GPS) RWY 34

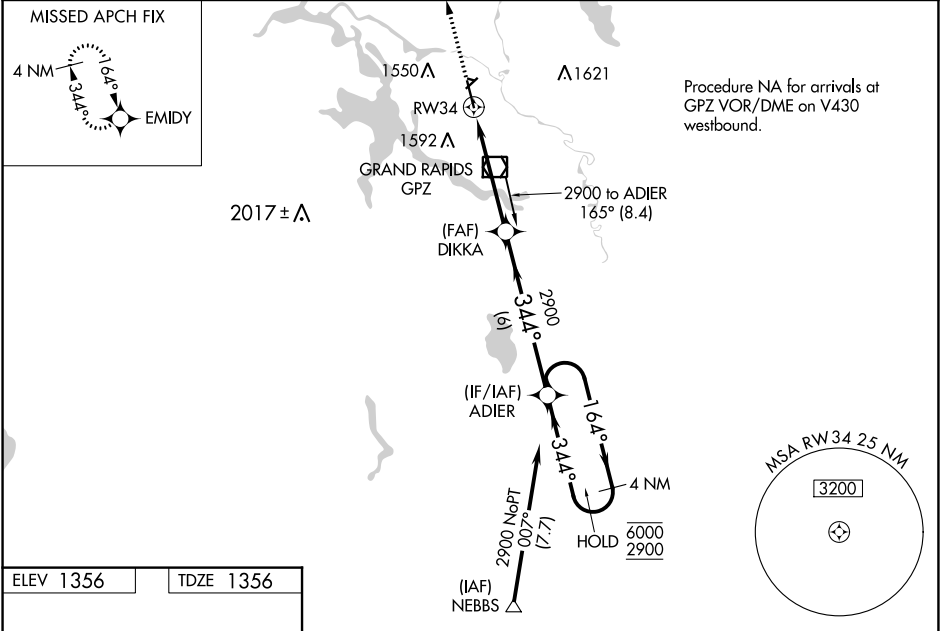
RNP APCH.

⚠ Circling NA to Rws 10 and 28. Circling NA for Cat D east of Rwy 16-34. Circling Rwy 5 NA at night. For uncompensated Baro-VNAV systems, LNAV/VNAV NA below -17°C or above 49°C. For inop ALS, increase LPV all Cats visibility to 1 SM, increase LNAV/VNAV all Cats visibility to 1½ SM, increase LNAV Cats C and D visibility to 1¾ SM.

MALSR

MISSED APPROACH: Climb to 3000 direct EMIDY and hold.

AWOS-3PT <b>118.425</b>	MINNEAPOLIS CENTER <b>127.9 281.45</b>	UNICOM <b>122.8 (CTAF) 0</b>
----------------------------	---	---------------------------------



ELEV 1356 TDZE 1356

3000 EMIDY VGSI and RNAV glidepath not coincident (VGSI Angle 3.00/TCH 53).

\*LNAV only

\*1.4 NM to RW34

RW34

DIKKA 2900

ADIER 4 NM Holding Pattern

164° 344° 6000 2900

GP 3.04° TCH 60

1.4 NM 3.2 NM 6 NM

CATEGORY	A	B	C	D
LPV DA	1683-1½ 327 (400-1½)			
LNAV/VNAV DA	1928-1½ 572 (600-1½)			
LNAV MDA	1860-1½	504 (600-1½)	1860-1	504 (600-1)
CIRCLING	1900-1	544 (600-1)	1900-1½ 544 (600-1½)	2000-2 644 (700-2)