

VOR/DME GPZ	APP CRS	Rwy Idg	5756
111.4	334°	TDZE	1356
Chan 51		Apt Elev	1356

GRAND RAPIDS/  
ITASCA COUNTY-GORDON NEWSTROM FIELD (GPZ)

VOR RWY 34

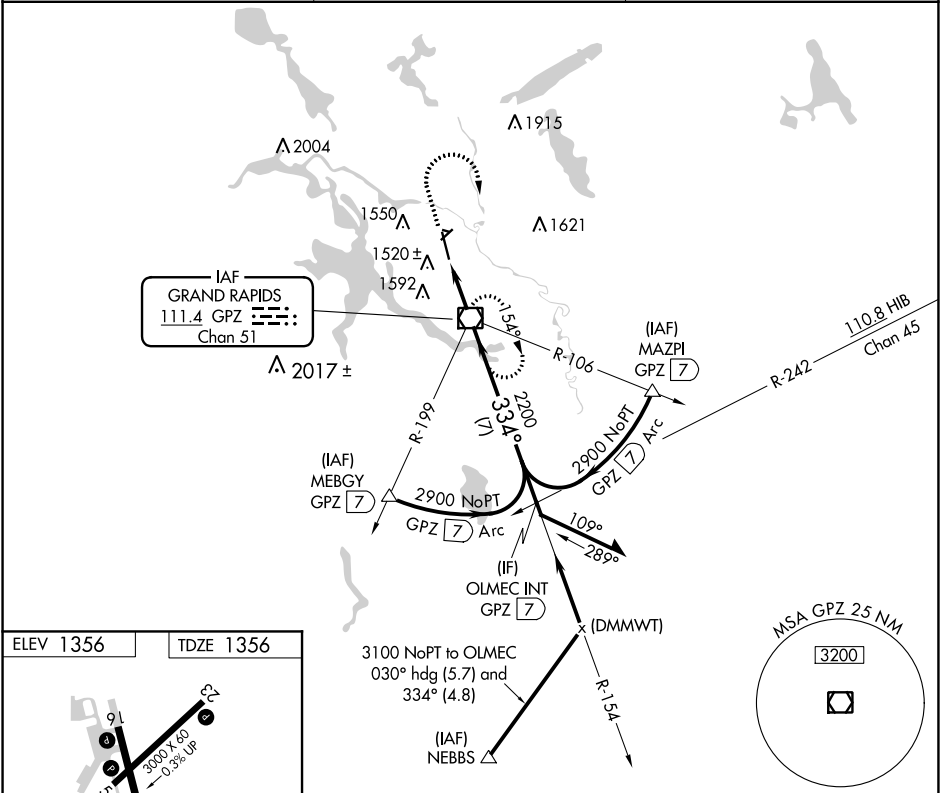
**V** VDP NA when using Hibbings altimeter setting. Circling Rwy 5 NA at night.

**A** Circling NA for Cat D east of Rwy 16-34. When local altimeter setting not received, use Hibbing altimeter setting and increase all MDAs 80 feet, increase S-34 Cat C visibility 1/8 SM and Circling Cats C/D visibility 1/4 SM.

**MALSR**

**MISSED APPROACH:** Climb to 3100 then right turn direct GPZ VOR/DME and hold.

AWOS-3PT 118.425	MINNEAPOLIS CENTER 127.9 281.45	UNICOM 122.8 (CTAF) <b>0</b>
---------------------	------------------------------------	---------------------------------



ELEV 1356 TDZE 1356


REIL Rwys 5, 16, 23 **0**

HIRL Rwy 16-34 **0**

MIRL Rwy 5-23 **0**

FAF to MAP 2.3 NM

Knots	60	90	120	150	180
Min:Sec	2:18	1:32	1:09	0:55	0:46

<div><div><div>3100</div><div>↑</div></div><div><div></div><div>↗</div></div><div><div>GPZ</div><div></div></div><div><div>GPZ</div><div>VOR/DME</div><div>3100</div></div><div><div>Remain within 10 NM</div></div></div>				
<div><div><div>GPZ</div><div>2.3</div></div><div><div>GPZ</div><div>1</div></div><div><div>3.29°</div><div>TCH 49</div></div><div><div>2200</div></div></div>				
<div><div>1.3 NM</div><div>1 NM</div></div>				
CATEGORY	A		B	
S-34	1800-½ 444 (500-½)		1800-7⁄8 444 (500-7⁄8)	1800-1 444 (500-1)
<b>C</b> CIRCLING	1900-1 544 (600-1)		1900-1½ 544 (600-1½)	2000-2 644 (700-2)

NC-1, 31 DEC 2020 to 28 JAN 2021

NC-1, 31 DEC 2020 to 28 JAN 2021