

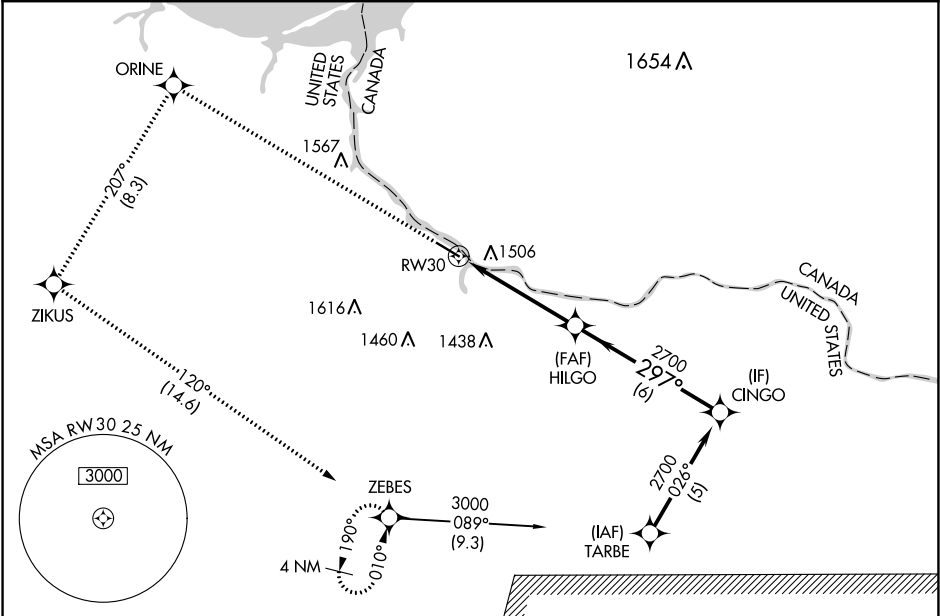
WAAS CH 81814 W30A	APP CRS 297°	Rwy Idg TDZE Apt Elev	5498 1085 1085
--	------------------------	-----------------------------	---

RNAV (GPS) RWY 30

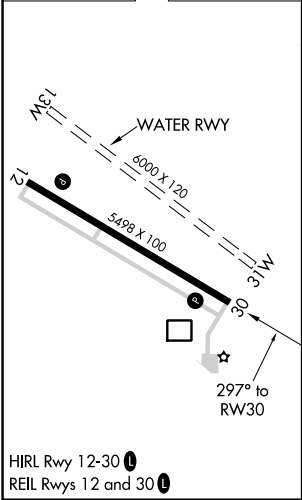
BAUDETTE INTL (BDE)

RNP APCH.	MISSED APPROACH: Climb to 3000 direct ORINE and left turn on track 207° to ZIKUS and on track 120° to ZEBES and hold.
<div><div>⚠</div><div>Circling NA to Rwy 13W and 31W. Rwy 30 helicopter visibility reduction below ¾ SM NA. For uncompensated Baro-VNAV systems, LNAV/VNAV NA below -17°C or above 54°C.</div></div>	

ASOS 126.775	MINNEAPOLIS CENTER 134.75 251.1	UNICOM 122.8 (CTAF) 0
------------------------	---	---------------------------------



ELEV 1085	TDZE 1085
-----------	-----------



3000	ORINE	tr 207°	ZIKUS	tr 120°	ZEBES	HILGO	CINGO
* LNAV only		* 2.2 NM to RW30		2700			2700
RW30		2.2 NM	2.7 NM	6 NM	GP 3.00°		
					TCH 49		
CATEGORY	A	B	C	D			
LPV DA	1335-¾			250 (300-¾)			
LNAV/VNAV DA	1985-4			900 (900-4)			
LNAV MDA	1820-1	735 (800-1)		1820-2	735 (800-2)	1820-2¼	735 (800-2¼)
CIRCLING	1860-1	1860-1¼	1860-2¼	1860-2½	775 (800-1)	775 (800-1¼)	775 (800-2½)

NC-1, 31 DEC 2020 to 28 JAN 2021

NC-1, 31 DEC 2020 to 28 JAN 2021