

LOC I-PKD	APP CRS	Rwy Idg	5497
110.9	311°	TDZE	1444
		Apt Elev	1445

ILS or LOC RWY 31

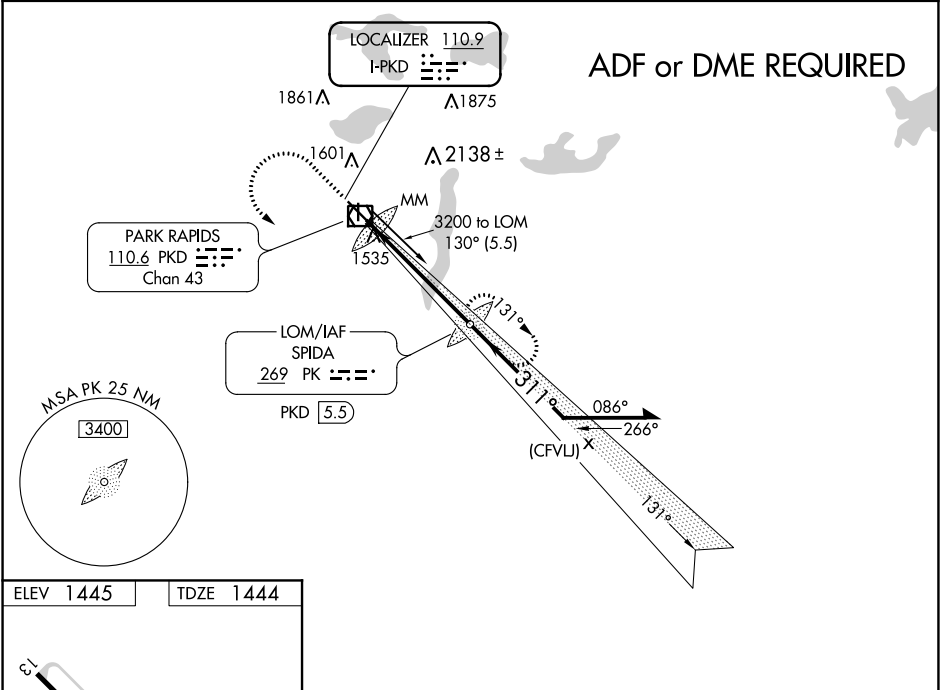
PARK RAPIDS MUNI-KONSHOK FIELD (PKD)

⚠ Circling Rwy 18, 36 NA at night. ADF required. VDP NA when using Wadena altimeter setting. When local altimeter setting not received, use Wadena altimeter setting and increase DA 75 feet and all MDA 80 feet; increase S-LOC 31 Cat C/D visibility 1/8 mile and increase Circling Cat C visibility 1/4 mile. For inop MALSRL, increase S-LOC 31 Cat C/D visibility to 1 3/8 mile. For inop MALSRL when using Wadena altimeter setting, increase S-ILS 31 all Cats visibility to 7/8 mile.

MALSRL

MISSED APPROACH:
Climb to 3200 then left turn direct SPIDA LOM and hold.

ASOS 110.6	MINNEAPOLIS CENTER 134.75 251.1	UNICOM 123.0 (CTAF)
---------------	------------------------------------	------------------------



ELEV 1445	TDZE 1444
-----------	-----------

HIRL Rwy 13-31

MIRL Rwy 18-36

REIL Rwy 13, 18 and 36

FAF to MAP 5.3 NM

Knots	60	90	120	150	180
Min:Sec	5:18	3:32	2:39	2:07	1:46

3200	PK	VGSI and ILS glidepath not coincident (VGSI Angle 3.00/TCH 48).		
		Remain within 10 NM		
*LOC only	*PKD 1.6	3193		
		311°		
PKD 0.3	MM	3200		
0.4	0.9	3.9 NM		
CATEGORY	A	B	C	D
S-ILS 31	1644-1/2 200 (200-1/2)			
S-LOC 31	1920-1/2 476 (500-1/2)		1920-1 476 (500-1)	
CIRCLING	1920-1 475 (500-1)	1980-1 535 (600-1)	2000-1 555 (600-1 1/2)	2500-3 1055 (1100-3)