

LOC I-VKE <b>108.7</b>	APP CRS <b>311°</b>	Rwy Idg TDZE Apt Elev	<b>6401</b> <b>1450</b> <b>1470</b>
---------------------------	------------------------	-----------------------------	---

ILS or LOC/DME RWY 31

DEVILS LAKE RGNL (DVL)

NA

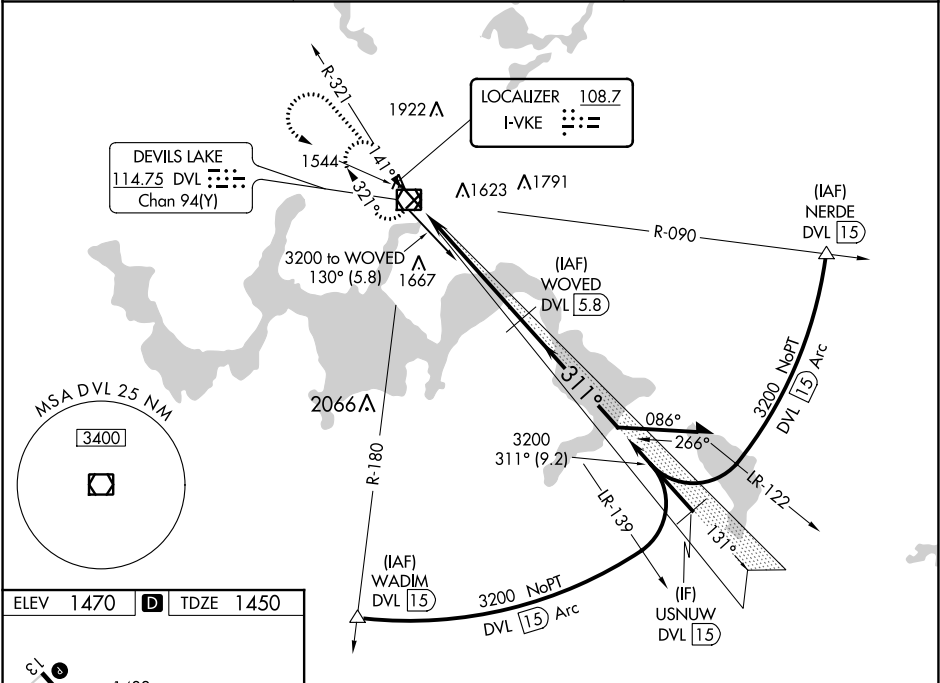
When local altimeter setting not received, use Cando altimeter setting and increase all DA 63 feet and all MDA 80 feet and increase S-LOC 31 Cat C/D and Circling Cat C/D visibility ¼ mile. For inop MALSR when using Cando altimeter setting, increase S-ILS 31 all Cats visibility to ¾ mile and S-LOC 31 Cat C/D to 1½ mile. DME from DVL VOR/DME. Simultaneous reception of I-VKE and DVL DME required.

MALSR

A5

MISSED APPROACH: Climb to 3200 then left turn direct DVL VOR/DME and hold.

AWOS-3PT <b>125.875</b>	MINNEAPOLIS CENTER <b>124.2 270.3</b>	UNICOM <b>122.8 (CTAF) 0</b>
----------------------------	--	---------------------------------



ELEV 1470

D

TDZE 1450

HIRL Rwy 13-31

REIL Rwy 3, 13 and 21

MIRL Rwy 3-21

<div>3200</div> <div><div></div><div></div></div>	<div>DVL</div> <div><div></div><div></div></div>	<div>WOVED DVL 5.8</div> <div>Remain within 10 NM</div>		
*LOC only.	<div><div>DVL 0.5</div><div>DVL 1.8</div></div>	<div><div>3200</div><div>131°</div><div>311°</div><div>3200</div><div>3200</div><div>GS 3.00°</div><div>TCH 44</div></div>		
CATEGORY	A	B	C	D
S-ILS 31	1650-½		200 (200-½)	
S-LOC 31	1780-½		330 (400-½)	
CIRCLING	2000-1 530 (600-1)		2240-2¼ 770 (800-2¼)	2240-2½ 770 (800-2½)