

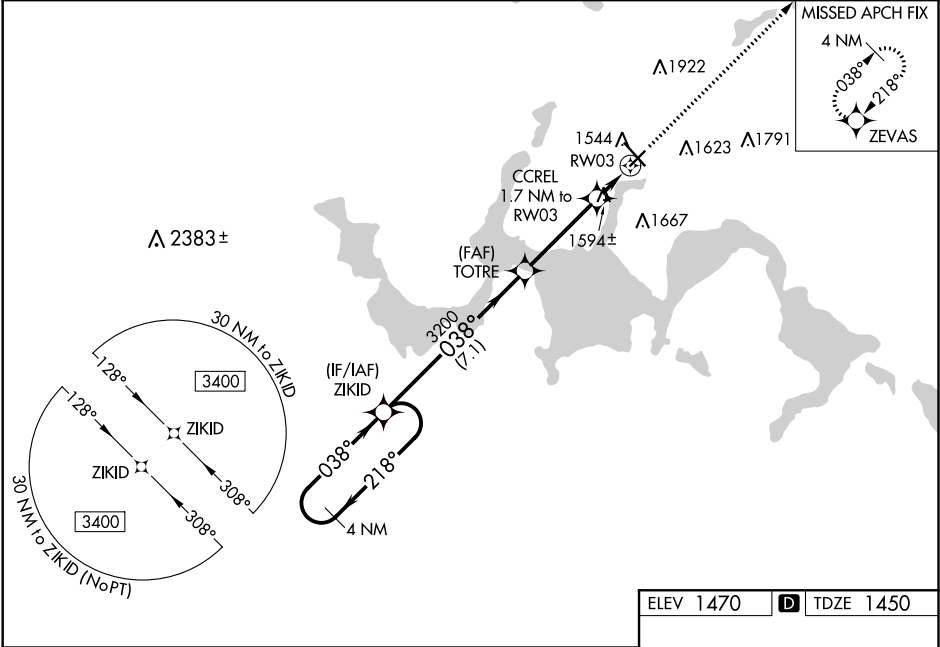
WAAS CH 93608 W03A	APP CRS 038°	Rwy Idg 4314 TDZE 1450 Apt Elev 1470
--	------------------------	---

RNAV (GPS) RWY 3
DEVILS LAKE RGNL (DVL)

⚠ For uncompensated Baro-VNAV systems, LNAV/VNAV NA below -17°C (2°F) or above 54°C (130°F). DME/DME RNP-0.3 NA. When local altimeter setting not received, use Cando altimeter setting and increase all DA 63 feet, and all MDA 80 feet, increase LNAV/VNAV all Cats visibility 1/8 mile, LNAV and Circling Cat C and D visibility 1/4 mile. Helicopter visibility reduction below 3/4 SM NA. Baro-VNAV NA when using Cando altimeter setting.

MISSED APPROACH: Climb to 3400 direct ZEVAS and hold.

AWOS-3PT 125.875	MINNEAPOLIS CENTER 124.2 270.3	UNICOM 122.8 (CTAF) 📶
----------------------------	--	--



VGSI and RNAV glidepath not coincident (VGSI Angle 3.00/TCH 25).

4 NM Holding Pattern

3400 ← 218° / 038° →

GP 3.00° TCH 50

ZIKID

TOTRE 3200

CCREL 1.7 NM to RW03

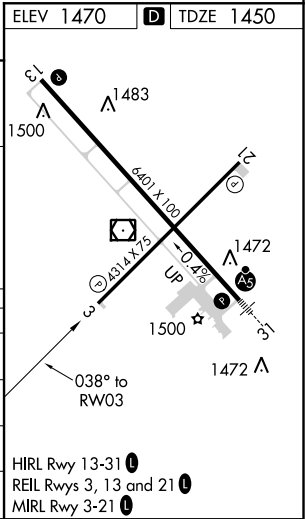
*LNAV only.

RW03

*2040

7.1 NM 3.6 NM 1.7 NM

CATEGORY	A	B	C	D
LPV DA	1700-1 250 (300-1)			
LNAV/VNAV DA	1714-1 264 (300-1)			
LNAV MDA	1860-1 410 (400-1)	1860-1 1/8 410 (400-1 1/8)		
CIRCLING	2000-1 530 (600-1)	2240-2 1/4 770 (800-2 1/4)	2240-2 1/2 770 (800-2 1/2)	



NC-1, 31 DEC 2020 to 28 JAN 2021

NC-1, 31 DEC 2020 to 28 JAN 2021