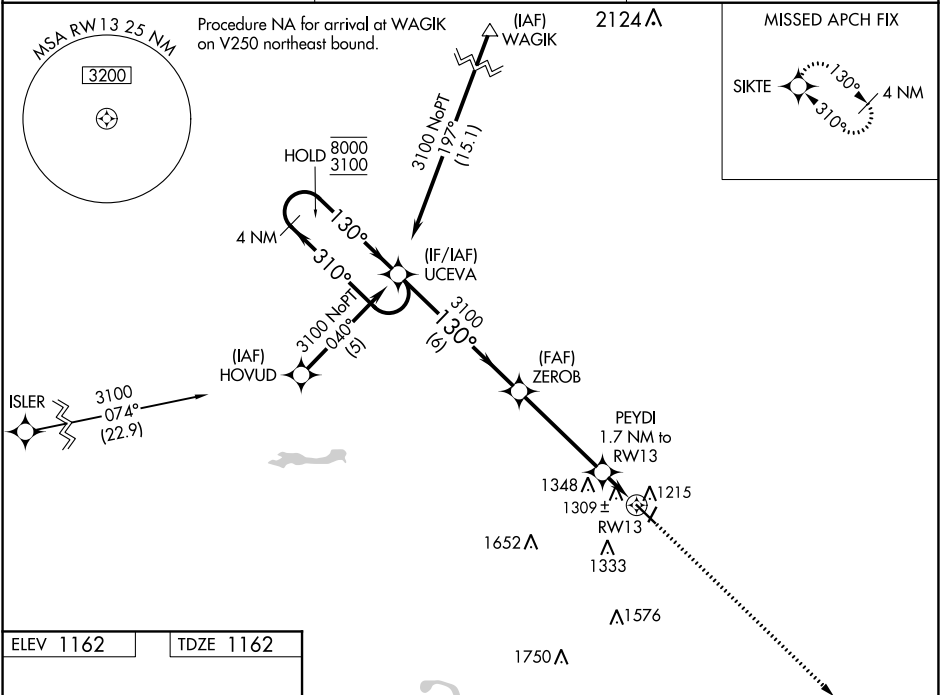


WAAS CH 45812 W13A	APP CRS 130°	Rwy Idg TDZE 1162 Apt Elev 1162
--	------------------------	---

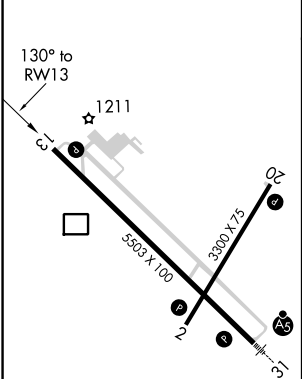
RNAV (GPS) RWY 13
FAIRMONT MUNI (FRM)

RNP APCH.	MISSED APPROACH: Climb to 3100 direct SIKTE and hold.
For uncompensated Baro-VNAV systems, procedure NA below -17°C or above 54°C. Rwy 13 helicopter visibility reduction below ¾ SM NA.	

AWOS-3PT 120.025	MINNEAPOLIS CENTER 127.75 257.7	UNICOM 122.8 (CTAF) 0
----------------------------	---	---------------------------------



ELEV 1162	TDZE 1162
-----------	-----------



- HIRL Rwy 13-31
- MIRL Rwy 2-20
- REIL Rwys 2, 13 and 20

VGSi and RNAV glidepath not coincident (VGSi Angle 3.00/TCH 43).		3100	SIKTE
4 NM Holding Pattern		UCEVA	ZEROB
8000 3100		3100	PEYDI 1.7 NM to RWY13
GP 3.00° TCH 48		1740	*1.1 NM to RWY13
6 NM		4.2 NM	0.6
CATEGORY	A	B	C
LPV DA	1460-1 298 (300-1)		
LNAV/VNAV DA	1695-2 533 (600-2)		
LNAV MDA	1560-1 398 (400-1)		
CIRCLING	1640-1 478 (500-1)	1660-1 498 (500-1)	1980-2¼ 818 (900-2¼)