

LOC I-FFM 111.5	APP CRS 308°	Rwy Idg TDZE 1182 Apt Elev 1183
---------------------------	------------------------	---

ILS or LOC RWY 31

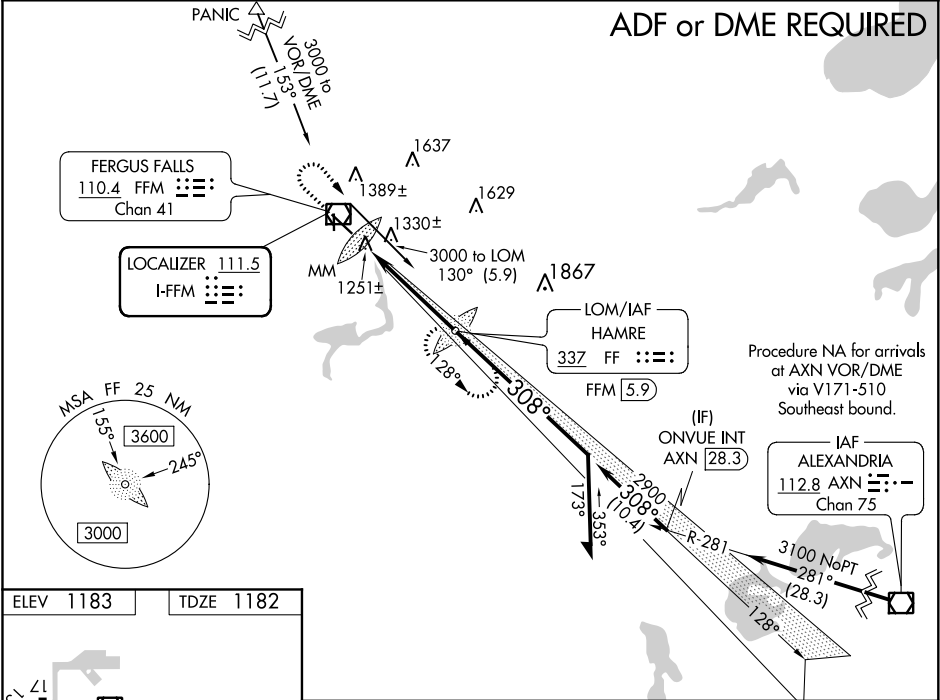
FERGUS FALLS MUNI-EINAR MICKELSON FIELD (FFM)

⚠ When local altimeter setting not received, use Wheaton altimeter setting and increase all DA 102 feet and all MDA 120 feet, increase S-LOC 31 and Circling Cat C and D visibility ½ mile. For inoperative MALSR, increase S-LOC 31 Cat D visibility ¼ mile. For inoperative MALSR when using Wheaton altimeter setting, increase S-ILS 31 all Cats visibility ½ mile. GS unusable for coupled approaches below 1400.

MALSR

MISSED APPROACH: Climb to 3000 then right turn direct HAMRE LOM/FFM 5.9 DME and hold.

AWOS-3 110.4	MINNEAPOLIS CENTER 126.1 269.2	UNICOM 122.8 (CTAF) 0
------------------------	--	---------------------------------





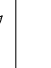
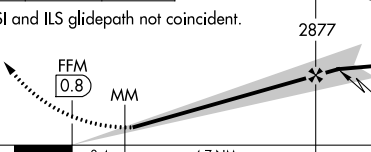
ELEV **1183** TDZE **1182**

REIL Rwy 13 and 35

MIRL Rwy 13-31 and 17-35

FAF to MAP 5.1 NM

Knots	60	90	120	150	180
Min:Sec	5:06	3:24	2:33	2:02	1:42

3000				FF LOM FFM 5.9	Remain within 10 NM
VGSI and ILS glidepath not coincident.					
					
CATEGORY	A	B	C	D	
S-ILS 31	1382-½ 200 (200-½)				
S-LOC 31	1520-½ 338 (400-½)			1520-¾ 338 (400-¾)	
CIRCLING	1640-1 457 (500-1)	1740-1 557 (600-1)	1740-1½ 557 (600-1½)	1880-2¼ 697 (700-2¼)	

ILS or LOC RWY 31

NC-1, 31 DEC 2020 to 28 JAN 2021

NC-1, 31 DEC 2020 to 28 JAN 2021