

WAAS CH 65920 W13A	APP CRS 128°	Rwy Idg 5639 TDZE 1182 Apt Elev 1183
--	------------------------	---

RNAV (GPS) RWY 13

FERGUS FALLS MUNI-EINAR MICKELSON FIELD (FFM)

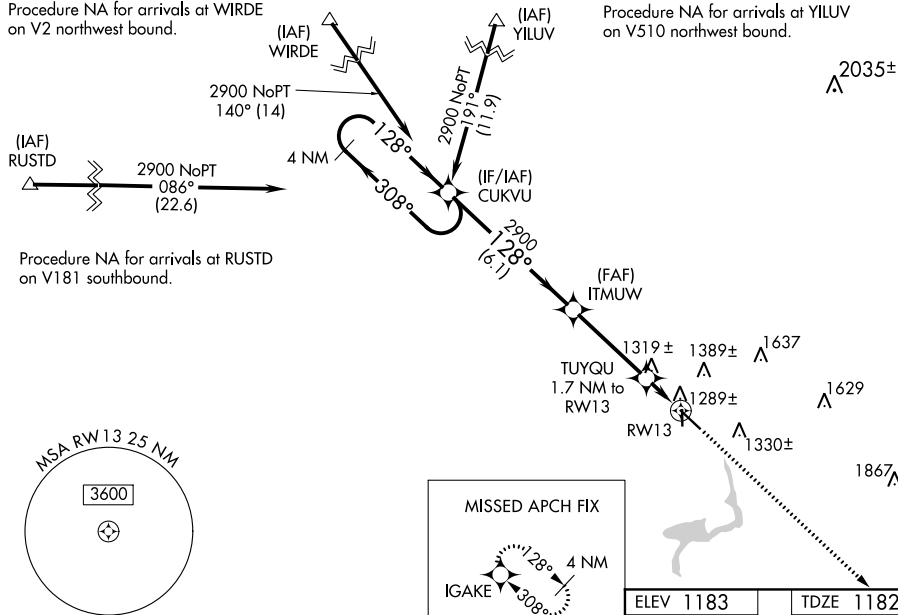
T For uncompensated Baro-VNAV systems, LNAV/VNAV NA below -17°C (2°F) or above 36°C (96°F). DME/DME RNP-0.3 NA. When local altimeter setting not received, use Wahpeton altimeter setting, and increase all DA 74 feet, increase all MDA 80 feet. Increase LPV ½ all Cats, and LNAV/VNAV visibility ¼ mile all Cats; increase LNAV Cat C and D and Circling Cat C and D visibility ¼ mile. Baro-VNAV and VDP NA when using Wahpeton altimeter setting.

MISSED APPROACH:
Climb to 2900 direct
IGAKE and hold.

AWOS-3 110.4	MINNEAPOLIS CENTER 126.1 269.2	UNICOM 122.8 (CTAF) 0
------------------------	--	---------------------------------

Procedure NA for arrivals at WIRDE
on V2 northwest bound.

Procedure NA for arrivals at YILUV
on V510 northwest bound.



4 NM
Holding Pattern

VGSI and RNAV glidepath not coincident (VGSI Angle 3.00/TCH 52).

2900 IGAKE

11

--	--

* LNAV only.

to

3

RW13



A horizontal beam of length 1.1 NM is shown. A downward force D is applied at the right end of the beam.

D

398 (400-1½)

1000 01

1880-2¼
103 1700 2¼)

697 (700-2¼)

US FALLS MUN

9'W

REIL Rwy 13 and 35

MRL Rwy 13-31 and 17-35

FERGUS FALLS, MINNESOTA

Orig-A 28MAY15

FERGUS FALLS MUNI-EINAR MICKELSON FIELD (FFM)

46°17'N-96°09'W

RNAV (GPS) RWY 13