

WAAS CH 49204 W17A	APP CRS 167°	Rwy Idg 5000 TDZE 1260 Apt Elev 1261
--	------------------------	---

RNAV (GPS) RWY 17
ALBERT LEA MUNI (AEL)

RNP APCH.

T Baro-VNAV NA when using Austin altimeter setting. For uncompensated Baro-VNAV systems, LNAV/VNAV NA below -28°C or above 36°C. Rwy 17 helicopter visibility reduction below $\frac{3}{4}$ SM NA. VDP NA with Austin altimeter setting. When local altimeter setting not received, use Austin altimeter setting and increase all DA 48 feet and all MDA 60 feet; increase LPV and LNAV/VNAV visibility $\frac{1}{4}$ mile all Cats, and LNAV Cat C/D visibility $\frac{1}{8}$ mile.

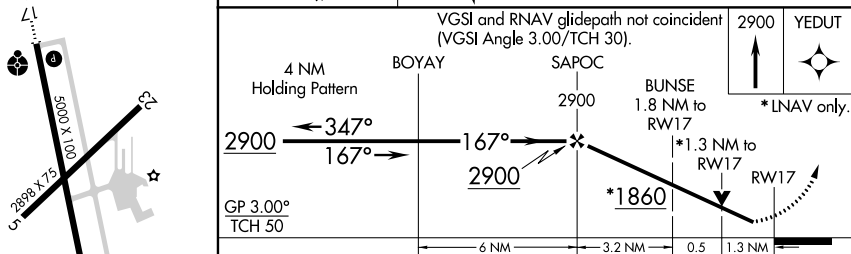
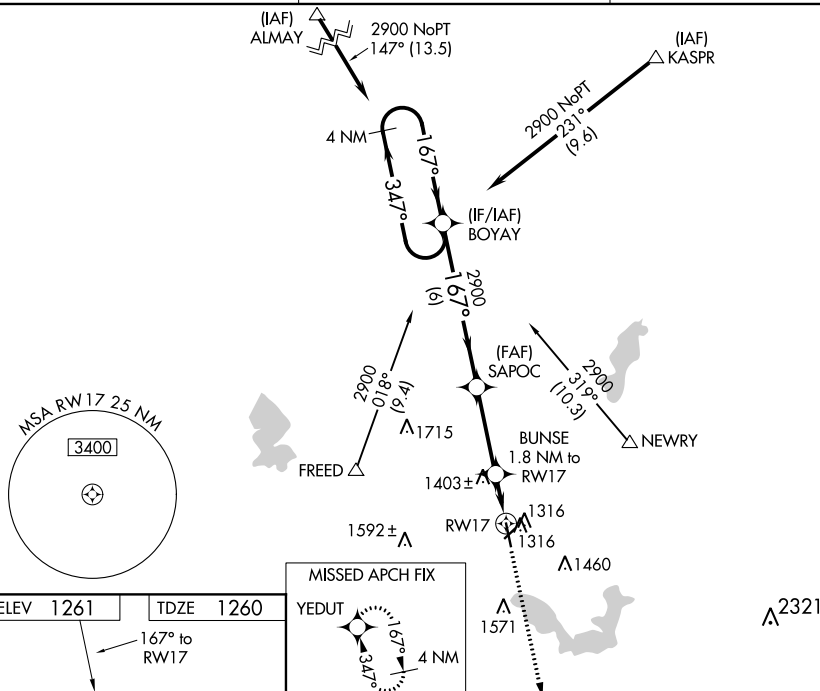
ODALS



AWOS-3
109.8

ROCHESTER APP CON★
119.8 251.125

UNICOM
123.0 (CTAF) **L**



CATEGORY	A	B	C	D
LPV DA	1510- $\frac{3}{4}$ 250 (300- $\frac{3}{4}$)			
LNAV/ VNAV DA	1510- $\frac{3}{4}$ 250 (300- $\frac{3}{4}$)			
LNAV MDA	1700-1 440 (500-1)		1700-1 $\frac{1}{4}$ 440 (500-1 $\frac{1}{4}$)	