

WAAS  
CH **82627**  
**W12A**

APP CRS  
**122°**

Rwy Idg  
TDZE **1127**

Apt Elev  
**1145**

**RNAV (GPS) RWY 12**

OWATONNA DEGNER RGNL (OWA)

RNP APCH

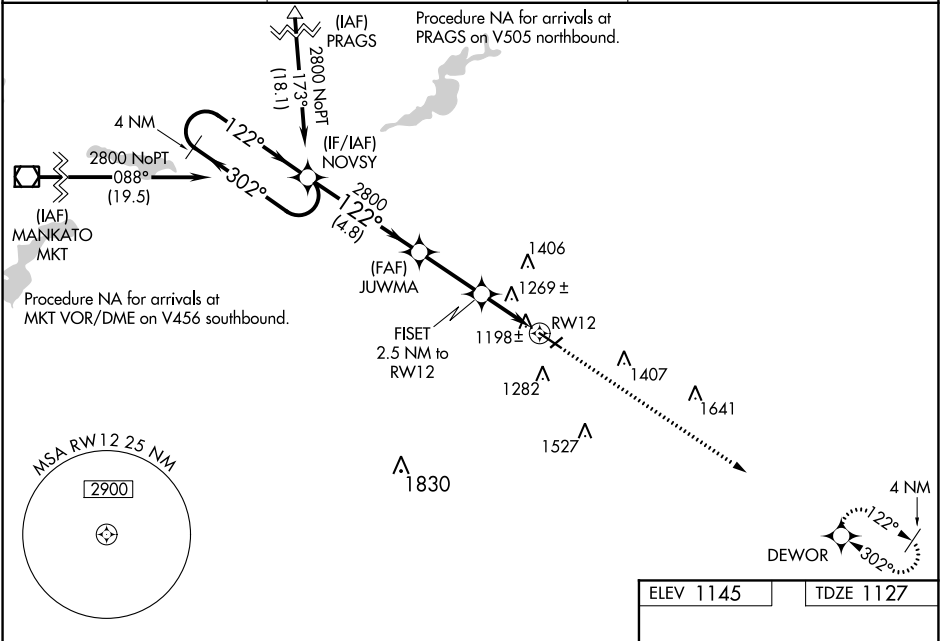
▼

▲

Baro-VNAV NA when using Faribault altimeter setting. For uncompensated Baro-VNAV systems, LNAV/VNAV NA below -17°C (2°F) or above 36°C (96°F). VDP NA with Faribault altimeter setting. When local altimeter setting not received, use Faribault altimeter setting and increase all DA 41 feet and all MDA 60 feet. Increase LPV all Cats visibility to 1¼ SM. Increase LNAV/VNAV all Cats visibility to 1 SM and LNAV Cat C/D visibility to 1¾ SM. Increase Circling Cat C visibility to 1¾ SM and Cat D visibility to 2½ SM.

MISSED APPROACH:  
Climb to 2900 direct DEWOR and hold.

AWOS-3 <b>128.325</b>	ROCHESTER APP CON ★ <b>119.8 251.125</b>	UNICOM <b>122.7 (CTAF) 0</b>
--------------------------	---	---------------------------------



4 NM Holding Pattern

NOVSY

JUWMA

FISET 2.5 NM to RW12

2900 DEWOR

\*LNAV only

122° to RW12

0.7% UP

5500 X 100

3000 X 75

1:30

GP 3.00°	TCH 40	4.8 NM	2.7 NM	1.3 NM	1.2 NM
CATEGORY	A	B	C	D	
LPV DA		1441-1	314 (300-1)		
LNAV/VNAV DA		1400-7/8	273 (300-7/8)		
LNAV MDA	1520-1	393 (400-1)	1520-1½	393 (400-1½)	
CIRCLING	1640-1 495 (500-1)	1700-1 555 (600-1)	1720-1½ 575 (600-1½)	1880-2¼ 735 (800-2¼)	

MIRL Rwy 5-23 0

REIL Rws 5, 12, and 23 0

HIRL Rwy 12-30 0