

VOR/DME MVE	APP CRS	Rwy Idg	3999
111.6	130°	TDZE	1034
Chan 53		Apt Elev	1035

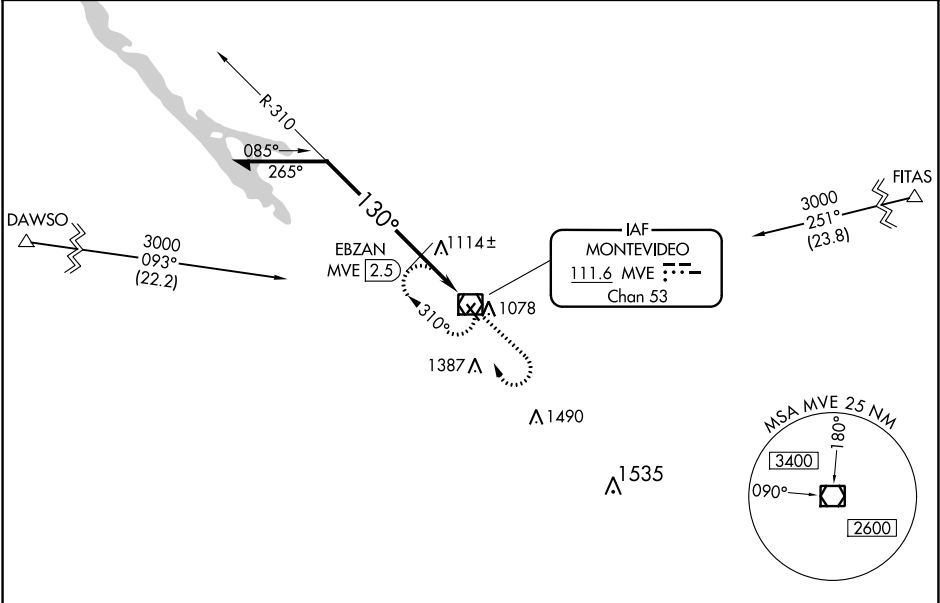
VOR RWY 14

MONTEVIDEO-CHIPPEWA COUNTY (MVE)

When local altimeter setting not received, use Granite Falls altimeter setting and increase all MDA 40 feet, increase S-14 Cats C and D visibility 1/8 mile, Circling Cat C visibility 1/8 mile and Cat D visibility 1/4 mile. Increase EBZAN fix Minimums S-14 Cats C and D visibility 1/8 mile and Circling Cat D visibility 1/4 mile. When VGSI inop, Straight-In/Circling Rwy 14 Procedure NA at night. Rwy 14 helicopter visibility reduction below 1 SM NA. Circling to Rwy 3-21 NA.

MISSED APPROACH: Climb to 2000 then climbing right turn to 2600 direct MVE VOR/DME and hold.

AWOS-3 111.6	MINNEAPOLIS CENTER 125.5 323.1	UNICOM 122.8 (CTAF) 1
-----------------	-----------------------------------	--------------------------



Remain within 10 NM	MVE VOR/DME 6000	2000	2600	MVE
		↑	↷	☐
EBZAN MVE 2.5		*1600 when using Granite Falls altimeter.		
2600		*1560		
310°		2.5 NM		
130°				

CATEGORY	A	B	C	D
S-14	1560-1	526 (600-1)	1560-1½	526 (600-1½)
CIRCLING	1560-1	525 (600-1)	1560-1½ 525 (600-1½)	1700-2 665 (700-2)
EBZAN FIX MINIMUMS				
S-14	1380-1		346 (400-1)	
CIRCLING	1560-1	525 (600-1)	1560-1½ 525 (600-1½)	1700-2 665 (700-2)

ELEV 1035 TDZE 1034

130° to VOR/DME

0.53% Up

2361 X 165

3999 X 75

0.48% Up

REIL Rwys 14 and 32 1

MIRL Rwy 14-32 1