

WAAS CH <b>93732</b> <b>W32A</b>	APP CRS <b>322°</b>	Rwy Idg TDZE <b>1131</b> Apt Elev <b>1136</b>	<b>4002</b> <b>1131</b> <b>1136</b>
--	------------------------	---	---

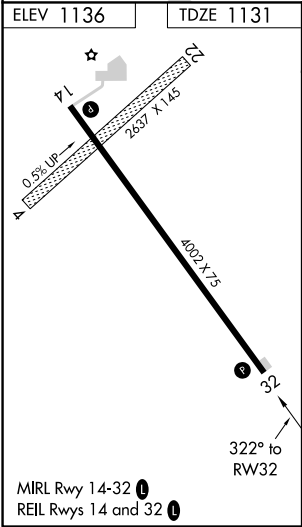
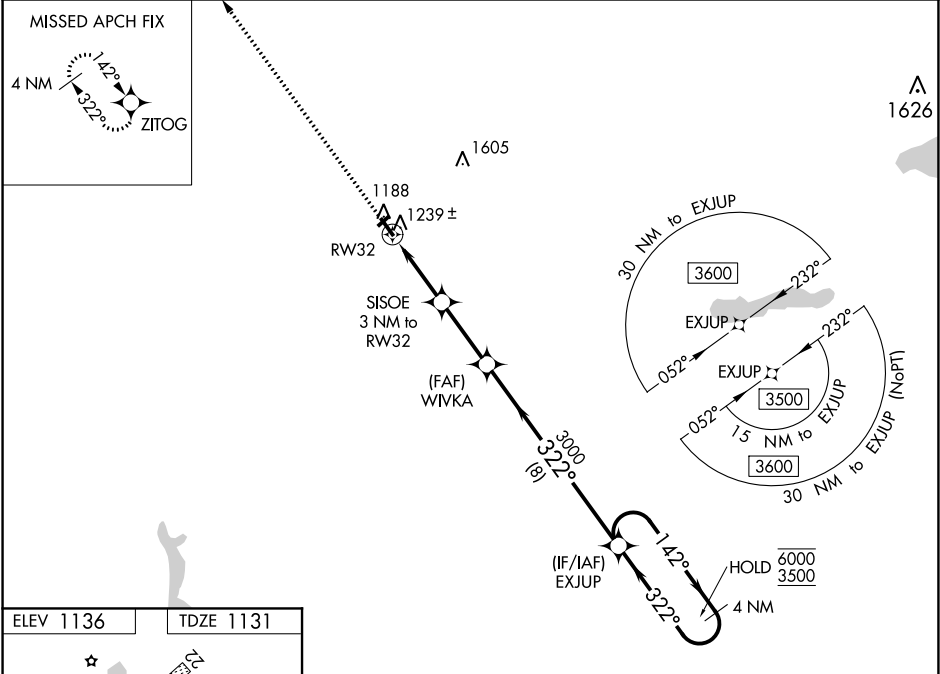
**RNAV (GPS) RWY 32**  
MORRIS MUNI-CHARLIE SCHMIDT FIELD (MOX)

**RNP APCH.**

**⚠** Circling NA to Rwy 4 and 22. Baro-VNAV and VDP NA when using Benson altimeter setting.  
**⚠** For uncompensated Baro-VNAV systems, LNAV/VNAV NA below -17°C or above 54°C.  
When local altimeter setting not received, use Benson altimeter setting and increase LPV DA to 1440 feet, LNAV/VNAV DA to 1594 feet and all MDA 60 feet and increase LNAV and Circling Cat C visibility ¼ SM.

**MISSED APPROACH:**  
Climb to 3000 direct ZITOG and hold.

AWOS-3 <b>109.6</b>	MINNEAPOLIS CENTER <b>126.1 269.2</b>	UNICOM <b>122.8 (CTAF) 0</b>
------------------------	--	---------------------------------



3000	ZITOG	VGSI and RNAV glidepath not coincident (VGSI Angle 3.00/TCH 42).			
*LNAV only.		SISOE 3 NM to RW32	WIVKA 3000	EXJUP	4 NM Holding Pattern
*1.2 NM to RW32		2120*	3000	142° → 6000 ← 322° 3500	GP 3.00° TCH 48
1.2 NM → 1.8 NM → 2.7 NM → 8 NM →					
CATEGORY	A	B	C	D	
LPV DA	1381-1 250 (300-1)			NA	
LNAV/VNAV DA	1535-1½ 404 (400-1½)			NA	
LNAV MDA	1540-1	409 (500-1)	1540-1½ 409 (500-1½)	NA	
CIRCLING	1560-1 424 (500-1)	1600-1 464 (500-1)	1860-2 724 (800-2)	NA	

NC-1, 31 DEC 2020 to 28 JAN 2021

NC-1, 31 DEC 2020 to 28 JAN 2021