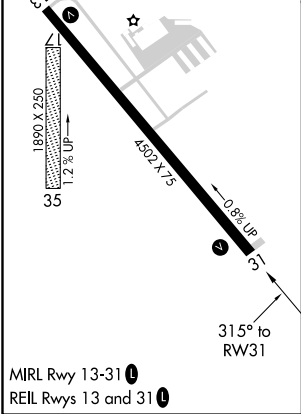
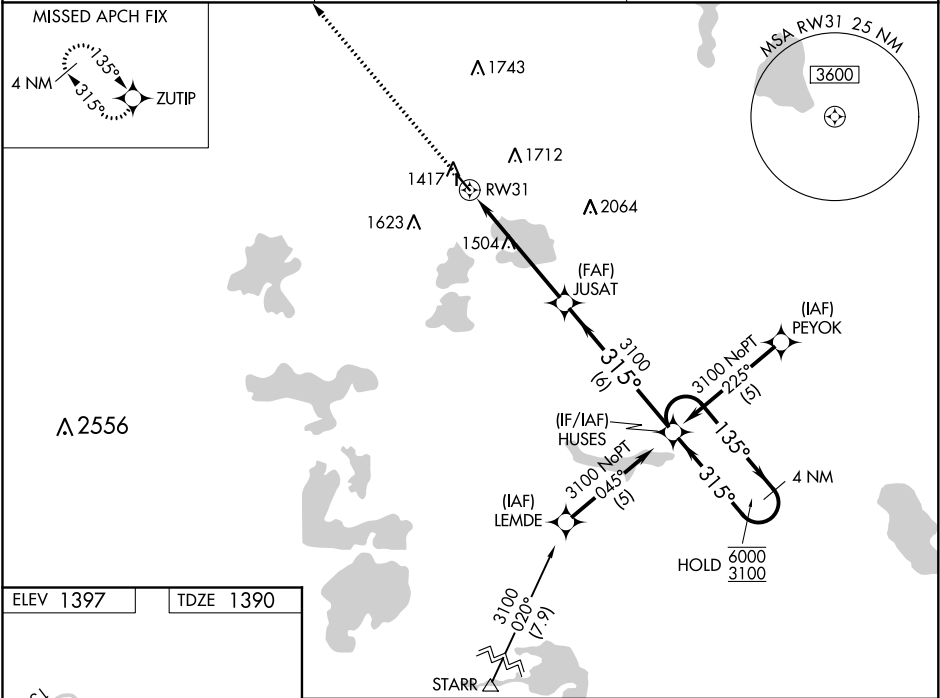


WAAS CH <b>86704</b> <b>W31A</b>	APP CRS <b>315°</b>	Rwy Idg TDZE Apt Elev	<b>4502</b> <b>1390</b> <b>1397</b>
--	------------------------	-----------------------------	---

RNAV (GPS) RWY 31  
DETROIT LAKES-WETHING FIELD (DTL)

RNP APCH. ▼ ▲ Circling NA to Rws 17 and 35. Circling to Rwy 13 NA at night. Rwy 31 helicopter visibility reduction below ¾ SM NA. VDP NA when using Park Rapids altimeter setting. When local altimeter setting not received, use Park Rapids altimeter setting; increase LPV DA to 1738 feet; increase all MDAs 100 feet and visibility Cat C ¼ SM and Cat D ½ SM and Circling visibility Circling Cat C and D ¼ SM.	MISSED APPROACH: Climb to 3100 direct ZUTIP and hold.
---	---

AWOS-3 <b>111.2</b>	MINNEAPOLIS CENTER <b>126.1 269.2</b>	UNICOM <b>122.8 (CTAF)</b> 0
------------------------	--	---------------------------------



3100 ZUTIP	VGSI and RNAV glidepath not coincident (VGSI Angle 3.00/TCH 38).			
*LNAV only	JUSAT 3100 HUSES 4 NM Holding Pattern			
*1.2 NM to RW31		315° 135° 6000 3100		
RW31		GP 3.00° TCH 35		
1.2 4.1 NM 6 NM				
CATEGORY	A	B	C	D
LPV DA	1654-1 264 (300-1)			
LNNAV MDA	1780-1 390 (400-1)	1780-1 390 (400-1 ½)	1780-1 390 (400-1 ¼)	
CIRCLING	1880-1 483 (500-1)	1940-1 543 (600-1)	1940-1 543 (600-1 ½)	2080-2 683 (700-2 ¼)