

VOR/DME DTL	APP CRS	Rwy Idg	4502
111.2	141°	TDZE	1397
Chan 49		Apt Elev	1397

VOR RWY 13

DETROIT LAKES-WETHING FIELD (DTL)

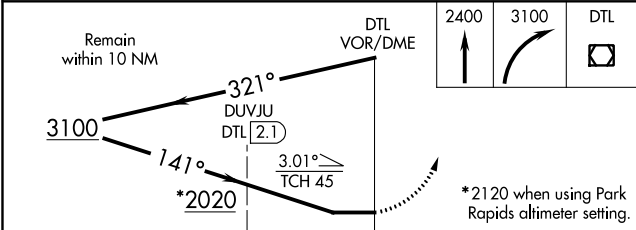
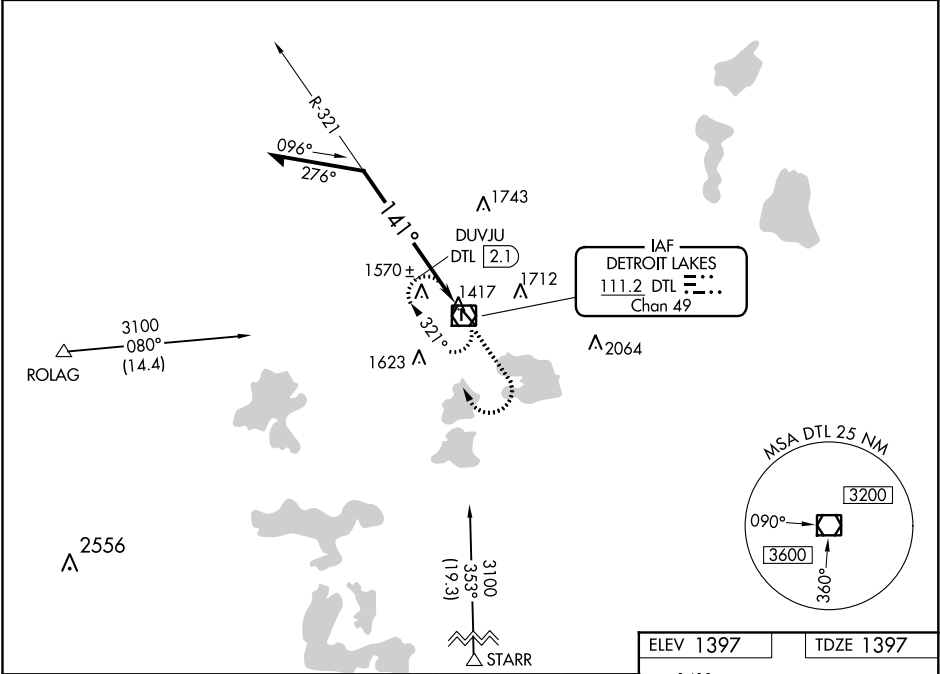
▼

▲ NA

When local altimeter setting not received, use Park Rapids altimeter setting and increase all MDA 100 feet, increase S-13 and Circling Cats C/D visibility ¼ mile. Increase DUVJU fix minimums S-13 and Circling Cats C/D visibility ¼ mile. Helicopter visibility reduction below 1 SM NA. Procedure NA at night.

MISSED APPROACH: Climb to 2400 then climbing right turn to 3100 direct DTL VOR/DME and hold.

AWOS-3	MINNEAPOLIS CENTER	UNICOM
111.2	126.1 269.2	122.8 (CTAF) 0



CATEGORY	A	B	C	D
S-13	2020-1 623 (700-1)		2020-1¾ 623 (700-1¾)	
CIRCLING	2020-1 623 (700-1)		2020-1¾ 623 (700-1¾)	2080-2¼ 683 (700-2¼)
DUVJU FIX MINIMUMS				
S-13	1820-1 423 (500-1)		1820-1¼ 423 (500-1¼)	
CIRCLING	1880-1 483 (500-1)	1940-1 543 (600-1)	1940-1½ 543 (600-1½)	2080-2¼ 683 (700-2¼)

ELEV 1397 TDZE 1397

141° to VOR/DME

1890 X 250 1.2 X UP 35

4502 X 75 0.8 X UP 35

MRL Rwy 13-31 0  
REIL Rwy 13 and 31 0