

VOR/DME DTL 111.2 Chan 49	APP CRS 310°	Rwy Idg 4502 TDZE 1390 Apt Elev 1397
---	------------------------	---

VOR RWY 31

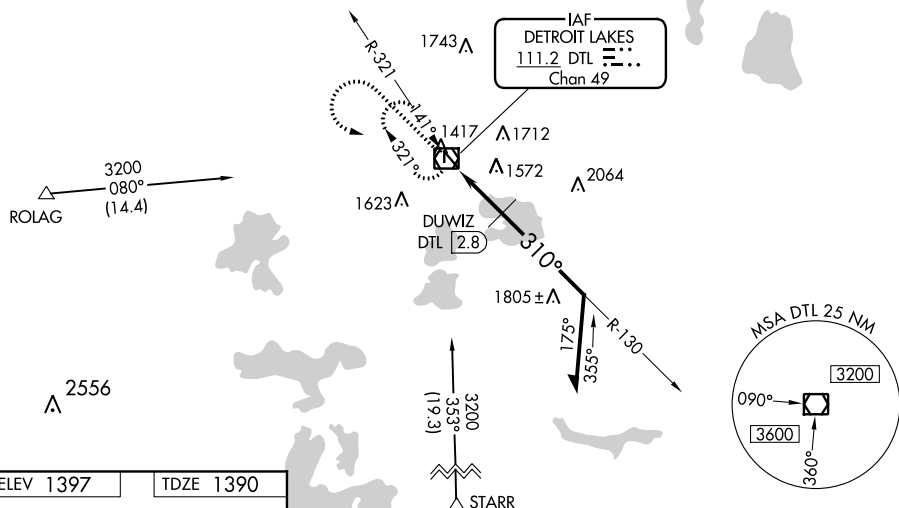
DETROIT LAKES-WETHING FIELD (DTL)

T When local altimeter setting not received, use Park Rapids altimeter setting and increase all MDA 100 feet, increase S-31 and Circling Cats C/D visibility ½ mile, Circling Cat A visibility ¼ mile, increase DUWIZ fix minimums S-31 Cat C, D visibility ⅜ mile, Circling Cat C visibility ¼ mile and Cat D ½ mile. Visibility reduction by helicopters NA. Procedure NA at night.

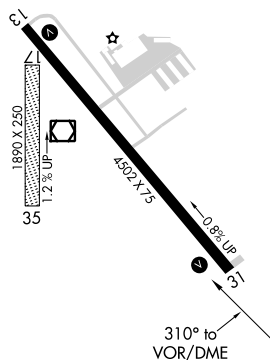
MISSED APPROACH: Climb to 2500 then climbing left turn to 3200 direct DTL VOR/DME and hold.

AWOS-3
111.2

MINNEAPOLIS CENTER
126.1 269.2




UNICOM
122.8 (CTAF) **L**

ELEV 1397		TDZE 1390
-----------	--	-----------

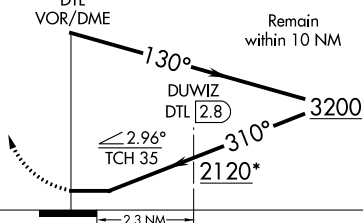


MIRL Rwy 13-31 L

REIL Rwy 13 and 31 L

2500	3200	DTL
		

* 2220 when using Park Rapids altimeter setting.



CATEGORY	A	B	C	D
S-31	2120-1 730 (800-1)	2120-1¼ 730 (800-¼)	2120-2	730 (800-2)
CIRCLING	2120-1 723 (800-1)	2120-1¼ 723 (800-¼)	2120-2 723 (800-2)	2120-2¼ 723 (800-2¼)
DUWIZ FIX MINIMUMS				
S-31	1880-1	490 (500-1)	1880-1⅓	490 (500-1⅓)
CIRCLING	1880-1 483 (500-1)	1940-1 543 (600-1)	1940-1½ 543 (600-1½)	2080-2¼ 683 (700-2¼)

VOR RWY 31