

WAAS
CH **56304**
W16A

APP CRS
162°

Rwy Idg
TDZE **1055**
Apt Elev **1060**

RNAV (GPS) RWY 16

ROSEAU MUNI/RUDY BILLBERG FIELD (R.O.X)

RNP APCH.

▼

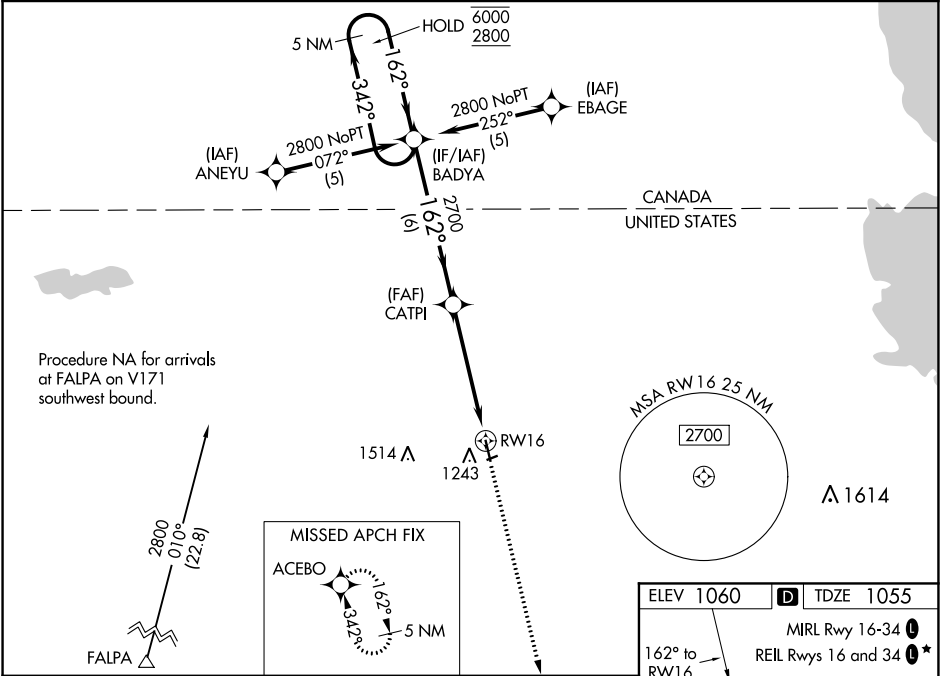
▲

Circling NA to Rwy 6 and 24. Baro-VNAV and VDP NA when using Warroad altimeter setting. For uncompensated Baro-VNAV systems, LNAV/VNAV NA below -17°C or above 46°C. When local altimeter setting not received, use Warroad altimeter setting and increase LPV DA to 1341 feet, LNAV/VNAV DA to 1439 feet and all MDA 40 feet, increase LNAV Cat C visibility $\frac{1}{8}$ SM.

MALSF

MISSED APPROACH: Climb to 2800 direct ACEBO and hold.

AWOS-3 108.8	MINNEAPOLIS CENTER 134.75 251.1	UNICOM 122.8 (CTAF) 0
------------------------	---	---------------------------------



5 NM Holding Pattern		VGSi and RNAV glidepath not coincident (VGSi Angle 3.00/TCH 44).		2800 ACEBO	
GP 3.00° TCH 40		BADA		CATPI	
6000 2800		162°		162°	
342°		162°		162°	
6 NM		3.7 NM		1.3 NM	
CATEGORY	A	B	C	D	
LPV DA	1305-1		250 (300-1)		
LNAV/VNAV DA	1403-1 1/4		348 (400-1 1/4)		
LNAV MDA	1500-1	445 (500-1)	1500-1 1/4	1500-1 1/2	
			445 (500-1 1/4)	445 (500-1 1/2)	
CIRCLING	1600-1	540 (600-1)	1600-1 1/2	1640-2	
			540 (600-1 1/2)	580 (600-2)	

ELEV 1060

D TDZE 1055

MIRL Rwy 16-34

REIL Rwy 16 and 34

162° to RW16

0.35 NM

4400 X 75

2097 X 250

34