

VOR/DME ROX	APP CRS	Rwy Idg	4401
108.8	349°	TDZE	1060
Chan 25		Apt Elev	1060

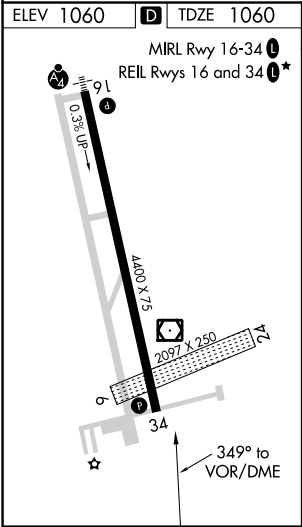
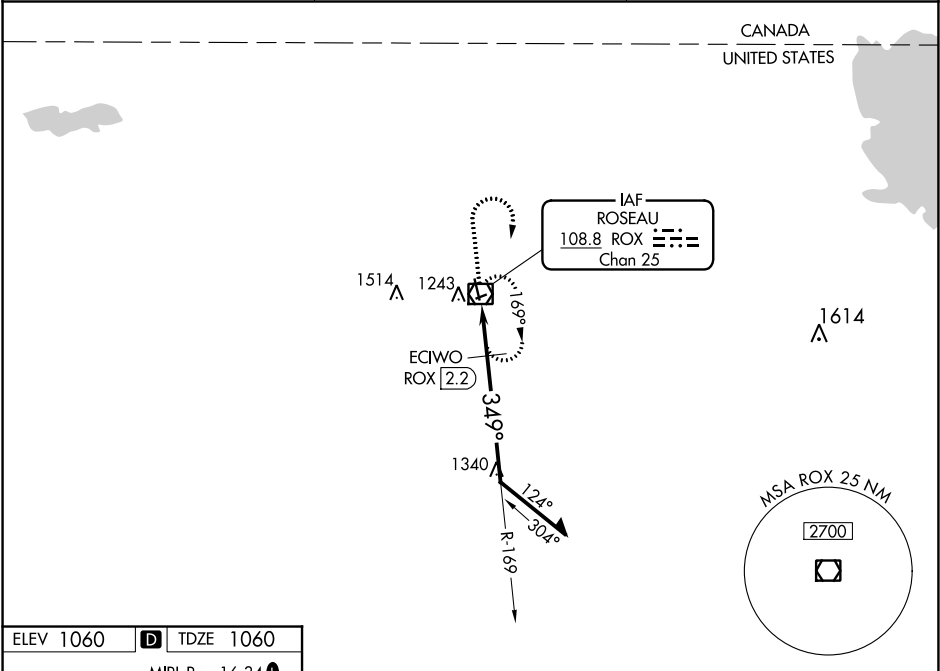
VOR RWY 34
ROSEAU MUNI/RUDY BILLBERG FIELD (ROX)



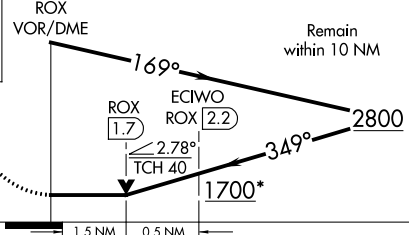
⚠ NA

If local altimeter setting not received, use Warroad altimeter setting and increase all MDAs 40 feet.
VDP NA when using Warroad altimeter setting.
Visibility reduction by helicopters NA.

MISSED APPROACH: Climb to 3000 then right turn direct ROX VOR/DME and hold.

AWOS-3 108.8	MINNEAPOLIS CENTER 134.75 251.1	UNICOM 122.8 (CTAF) 1
-----------------	------------------------------------	---------------------------------



3000 ↑		ROX 	ROX VOR/DME		
*1740 when using Warroad altimeter setting.					
VGSi and descent angles not coincident (VGSi Angle 3.00/TCH 44).					
CATEGORY	A	B	C	D	
S-34	1700-1	640 (700-1)	1700-1¾ 640 (700-1¾)	1700-2 640 (700-2)	
CIRCLING	1700-1	640 (700-1)	1700-1¾ 640 (700-1¾)	1700-2 640 (700-2)	
ECIWO FIX MINIMUMS					
S-34	1560-1	500 (500-1)	1560-1¼ 500 (500-1¼)	1560-1½ 500 (500-1½)	
CIRCLING	1600-1	540 (600-1)	1600-1½ 540 (600-1½)	1640-2 580 (600-2)	

NC-1, 31 DEC 2020 to 28 JAN 2021

NC-1, 31 DEC 2020 to 28 JAN 2021