

NDB CKC	APP CRS	Rwy Idg	5002
358	285°	TDZE	1797
		Apt Elev	1803

NDB RWY 28

GRAND MARAIS/COOK COUNTY (CKC)

T

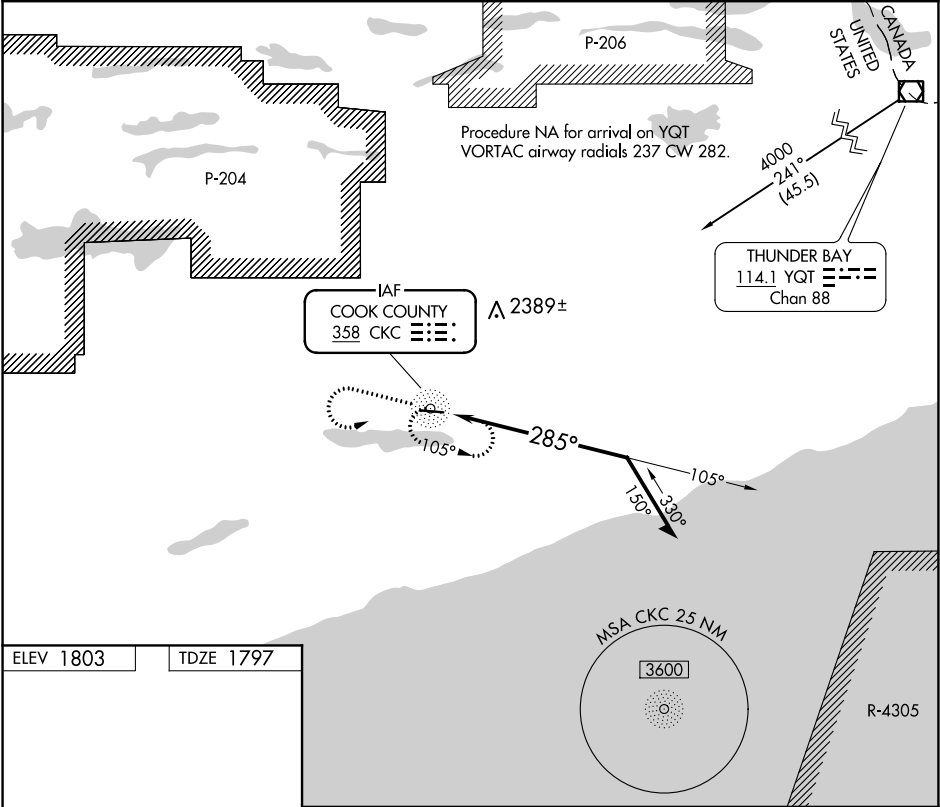
NA

-30°C

Circling Rwy 10 NA at night. Rwy 28 helicopter visibility reduction below ¾ SM NA.

MISSED APPROACH: Climb to 3000 then climbing left turn to 3500 direct CKC NDB and hold.

AWOS-3	MINNEAPOLIS CENTER	UNICOM
119.925	127.9 281.45	122.8 (CTAF) 0



ELEV 1803

TDZE 1797

MIRL Rwy 10-28 0
REIL Rwys 10 and 28 0

3000

3500

CKC

CATEGORY	A	B	C	D
S-28	2420-1	623 (700-1)	2420-1¾	623 (700-1¾)
CIRCLING	2420-1	617 (700-1)	2420-1¾ 617 (700-1¾)	2620-2¾ 817 (900-2¾)