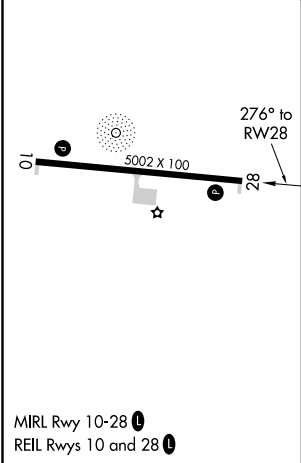
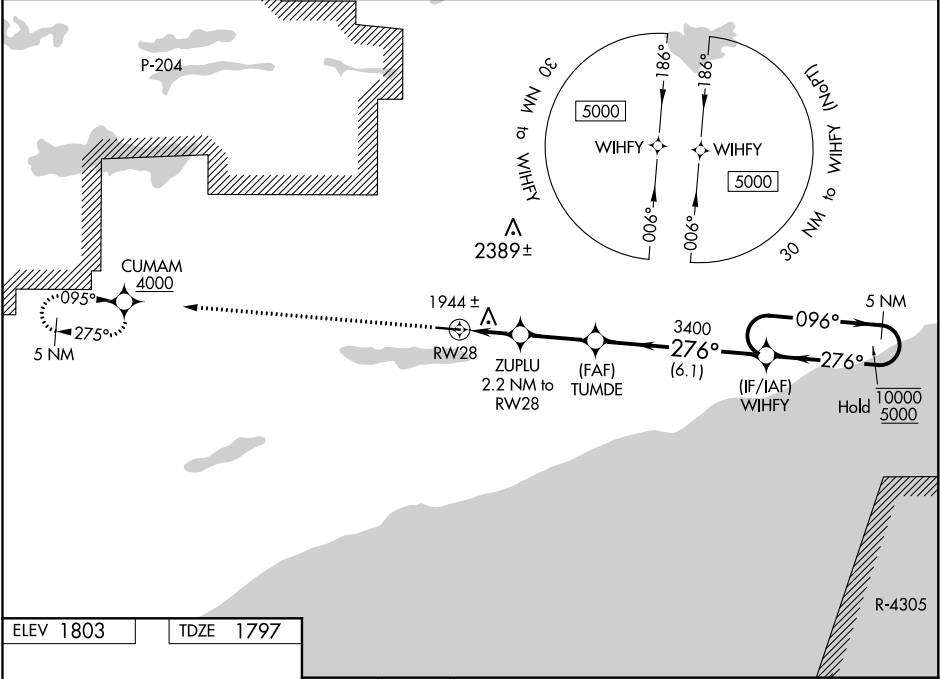



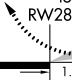

WAAS CH 69520 W28A	APP CRS 276°	Rwy Idg TDZE Apt Elev	5002 1797 1803
--	------------------------	-----------------------------	---

RNAV (GPS) RWY 28
GRAND MARAIS/COOK COUNTY (CKC)

RNP APCH: <div><div><div></div><div></div><div></div></div><div><div></div><div></div><div></div></div><div><div></div><div></div><div></div></div></div> <div>Circling Rwy 10 NA at night. Rwy 28 helicopter visibility reduction below ¾ SM NA. For uncompensated Baro-VNAV systems, LNAV/VNAV NA below -18°C or above 54°C.</div>	MISSED APPROACH: Climb to 7000 direct CUMAM, cross CUMAM at or above 4000 and hold, continue climb-in-hold to 7000.
---	---

AWOS-3 119.925	MINNEAPOLIS CENTER 127.9 281.45	UNICOM 122.8 (CTAF) 0
--------------------------	---	---------------------------------



7000 ↑ 4000	CUMAM 				
*LNAV only	ZUPLU 2.2 NM to RW28	TUMDE 3400	WIHFY	5 NM Holding Pattern	
	* 1.1 NM to RW28	3400	276°	096° → 10000 ← 276° 5000	GP 3.00° TCH 40
1.1	1.1	2.7 NM	6.1 NM		
2540*		3400			
CATEGORY	A	B	C	D	
LPV DA	2047-1		250 (300-1)		
LNAV/ VNAV DA	2219-1¼		422 (500-1¼)		
LNAV MDA	2200-1	403 (400-1)	2200-1½	403 (400-1½)	
 CIRCLING	2300-1	497 (500-1)	2380-1½ 577 (600-1½)	2640-2¾ 837 (900-2¾)	

NC-1, 31 DEC 2020 to 28 JAN 2021

NC-1, 31 DEC 2020 to 28 JAN 2021