

WAAS  
CH **53742**  
**W17A**

APP CRS  
**177°**

Rwy Idg  
TDZE **1411**  
Apt Elev **1411**

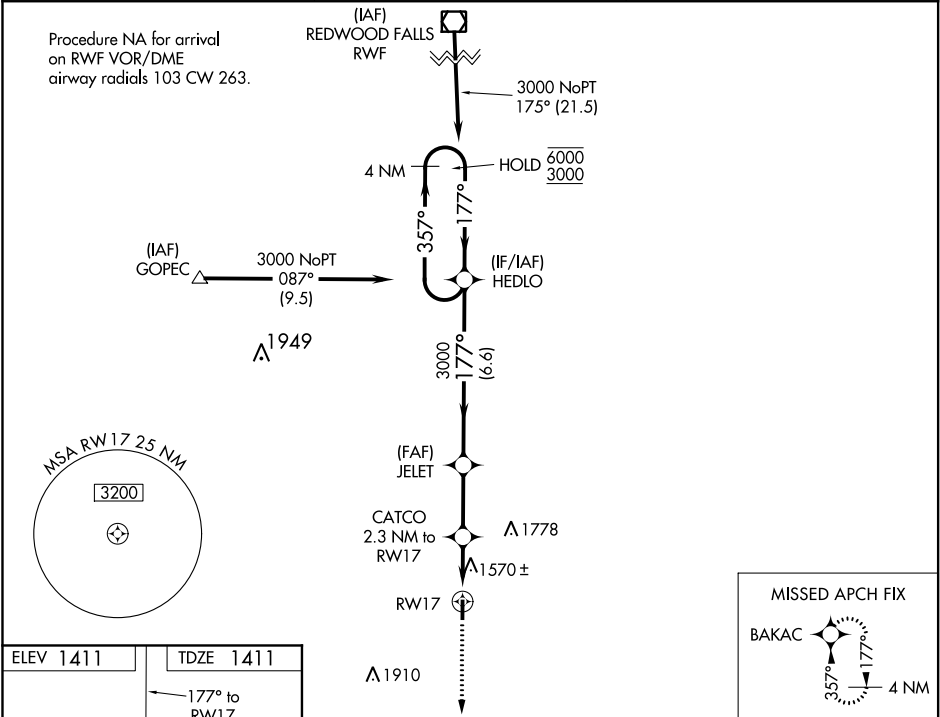
RNAV (GPS) RWY 17  
WINDOM MUNI (MWM)

RNP APCH.

▼ For uncompensated Baro-VNAV systems, LNAV/VNAV NA below -17°C or above 54°C.

MISSED APPROACH: Climb to 3100 direct BAKAC and hold.

AWOS-3 <b>118.525</b>	MINNEAPOLIS CENTER <b>127.1 290.2</b>	CTAF <b>122.9</b>
--------------------------	--	----------------------



ELEV **1411**

TDZE **1411**

177° to RW17

Δ 1

3598 X 75

35

MIRL Rwy 17-35

REIL Rwy 17 and 35

3100	BAKAC	JELET 3000	HEDLO	4 NM Holding Pattern
* LNAV only	* 1.2 NM to RW17	CATCO 2.3 NM to RW17		
		2180*	3000	177°
	1.2 NM	1.1 NM	2.6 NM	6.6 NM
357°				GP 3.00° TCH 40
CATEGORY	A	B	C	D
LPV DA	1661-1 250 (300-1)			NA
LNAV/VNAV DA	1858-1 $\frac{3}{8}$ 447 (500-1 $\frac{3}{8}$ )			NA
LNAV MDA	1820-1	409 (500-1)	1820-1 $\frac{1}{8}$ 409 (500-1 $\frac{1}{8}$ )	NA
CIRCLING	1880-1 469 (500-1)	1900-1 489 (500-1)	1920-1 $\frac{1}{2}$ 509 (600-1 $\frac{1}{2}$ )	NA

NC-1, 31 DEC 2020 to 28 JAN 2021

NC-1, 31 DEC 2020 to 28 JAN 2021