

WAAS
CH **87131**
W15A

APP CRS
150°

Rwy Idg
TDZE
Apt Elev
5401
1011
1011

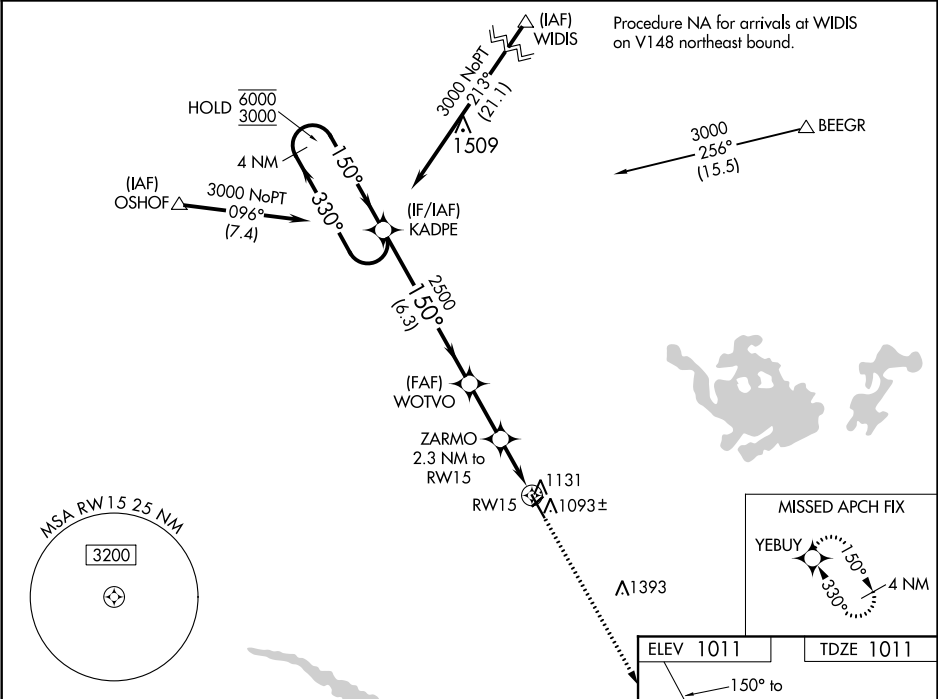
RNAV (GPS) RWY 15

NEW ULM MUNI (ULM)

RNP APCH.
▼ Circling NA to Rwy 4 and 22. For uncompensated Baro-VNAV systems, LNAV/VNAV NA below -17°C or above 54°C.

MISSED APPROACH: Climb to 3000 direct YEBUY and hold.

AWOS-3 118.325	MINNEAPOLIS CENTER 127.1 290.2	GCO 121.725	UNICOM 122.8 (CTAF) 0
--------------------------	--	-----------------------	---------------------------------



VGSI and RNAV glidepath not coincident (VGSI Angle 3.00/TCH 25).				
4 NM Holding Pattern KADPE				
6000 ← 330° 3000 → 150° 7.50° 2500 *1760				
GP 3.00° TCH 40				
6.3 NM 2.3 NM 1.1 NM 1.2 NM				
CATEGORY	A	B	C	D
LPV DA	1261-7/8 250 (300-7/8)			
LNAV/VNAV DA	1298-1 287 (300-1)			
LNAV MDA	1400-1 389 (400-1)		1400-1 3/8 389 (400-1 3/8)	
CIRCLING	1440-1 429 (500-1)	1500-1 489 (500-1)	1620-1 3/4 609 (700-1 3/4)	1620-2 609 (700-2)